



DISTRICT-SCALE DISCOVERY POTENTIAL

Exploring in the shadows of headframes

TSX-V: KLDC | US-OTC: KKLRF

August 2025

Historical Toburn Mine – Kirkland Lake, ON

DISCLAIMER



This presentation contains certain forward-looking statements within the meaning of Canadian securities legislation (the “Forward-looking Statements”). The Forward-looking Statements relate to future events or Kirkland Lake Discoveries Corp. (“Kirkland Lake Discoveries” or “KLDC”), future performance, business prospects or opportunities. Any statements that express or involve discussions with respect to predictions, expectations, beliefs, plans, projections, objectives, assumptions or future events or performance (often, but not always, using words or phrases such as “seek”, “anticipate”, “plan”, “continue”, “estimate”, “expect”, “forecast”, “may”, “will”, “project”, “predict”, “potential”, “targeting”, “intend”, “could”, “might”, “should”, “believe”, “outlook” and similar expressions) are not statements of historical fact and may be Forward-looking Statements.

Forward-looking Statements in this presentation include, but are not limited to, statements with respect to KLDC’s future plans and exploration programs, including the timing of such plans and programs, and the merits of KLDC’s mineral properties.

Although Kirkland Lake Discoveries believes that these Forward-looking Statements are based on reasonable assumptions, all Forward-looking Statements involve known and unknown risks, uncertainties and other factors that may cause the actual results, performance, achievements, events, or circumstances of KLDC to be materially different than expressed or implied by the Forward-looking Statements. Such risks include, among others, uncertainties related to fluctuations in metal prices; uncertainties inherent in the exploration of mineral properties; risks associated with the interpretation of drilling results and other tests; changes in planned work resulting from weather, logistical, technical or other factors; the possibility that results of work will not fulfill expectations and realize the perceived potential of KLDC’s mineral properties; the possibility that required permits may not be obtained in a timely manner or at all; risk of accidents, equipment breakdowns or other unanticipated difficulties or interruptions; the possibility of cost overruns or unanticipated expenses in work programs; the risk of environmental contamination or damage resulting from the exploration operations; the need to comply with environmental and governmental regulations; and the availability, or lack thereof, of capital and financing.

These Forward-looking Statements speak only as of the date of this presentation. Except as required by applicable securities laws, KLDC undertakes no obligation to update these Forward-looking Statements if management’s beliefs, estimates or opinions, or other factors, should change.

For more information on Kirkland Lake Discoveries, readers should refer to KLDC’s website at www.kirklandlakediscoveries.com.

QUALIFIED PERSON

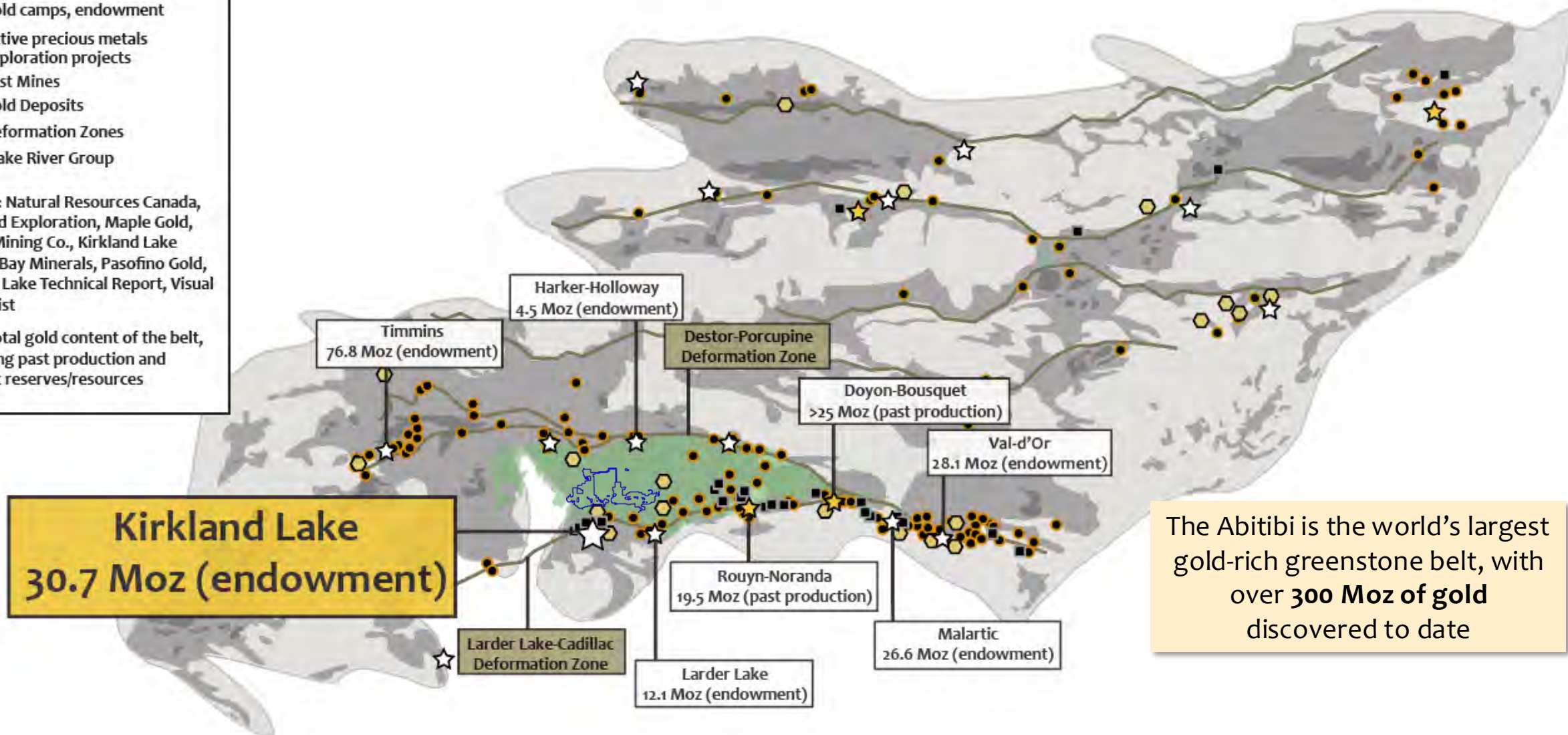
Mike Kilbourne, P. Geo., a qualified person as defined in National Instrument 43-101, has reviewed and approved the technical content of this presentation on behalf of the Company.

LOCATION. ROCKS. SCALE. THE INGREDIENTS FOR A MAJOR DISCOVERY

- ★ Gold camps, past production
- ☆ Gold camps, endowment
- ⬡ Active precious metals exploration projects
- Past Mines
- Gold Deposits
- Deformation Zones
- Blake River Group

Source: Natural Resources Canada, Midland Exploration, Maple Gold, Hecla Mining Co., Kirkland Lake Gold, CBay Minerals, Pasofino Gold, Detour Lake Technical Report, Visual Capitalist

*The total gold content of the belt, including past production and current reserves/resources



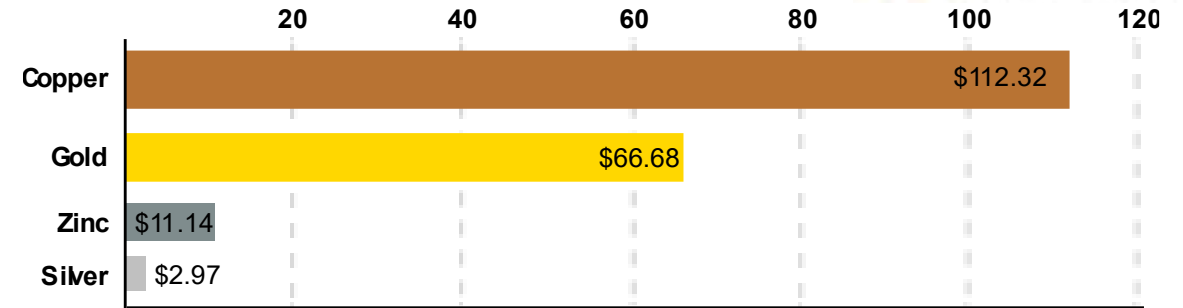
The Abitibi is the world's largest gold-rich greenstone belt, with over **300 Moz of gold** discovered to date

BLAKE RIVER GROUP – ONTARIO'S SLEEPING GIANT?

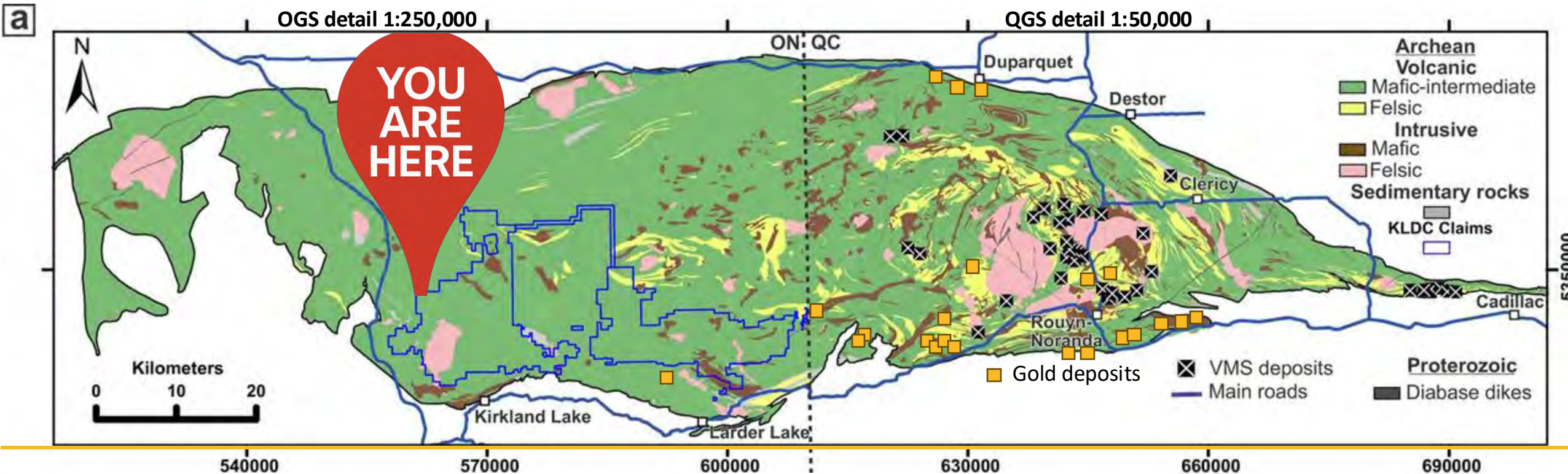


Located in one of the world's most **well-known mining belts**, our property covers a significant area of geologically **promising ground**.

The scale of our land package allows us to apply **modern exploration** techniques across the entire property, targeting areas that have **not** been fully **explored in the past**.

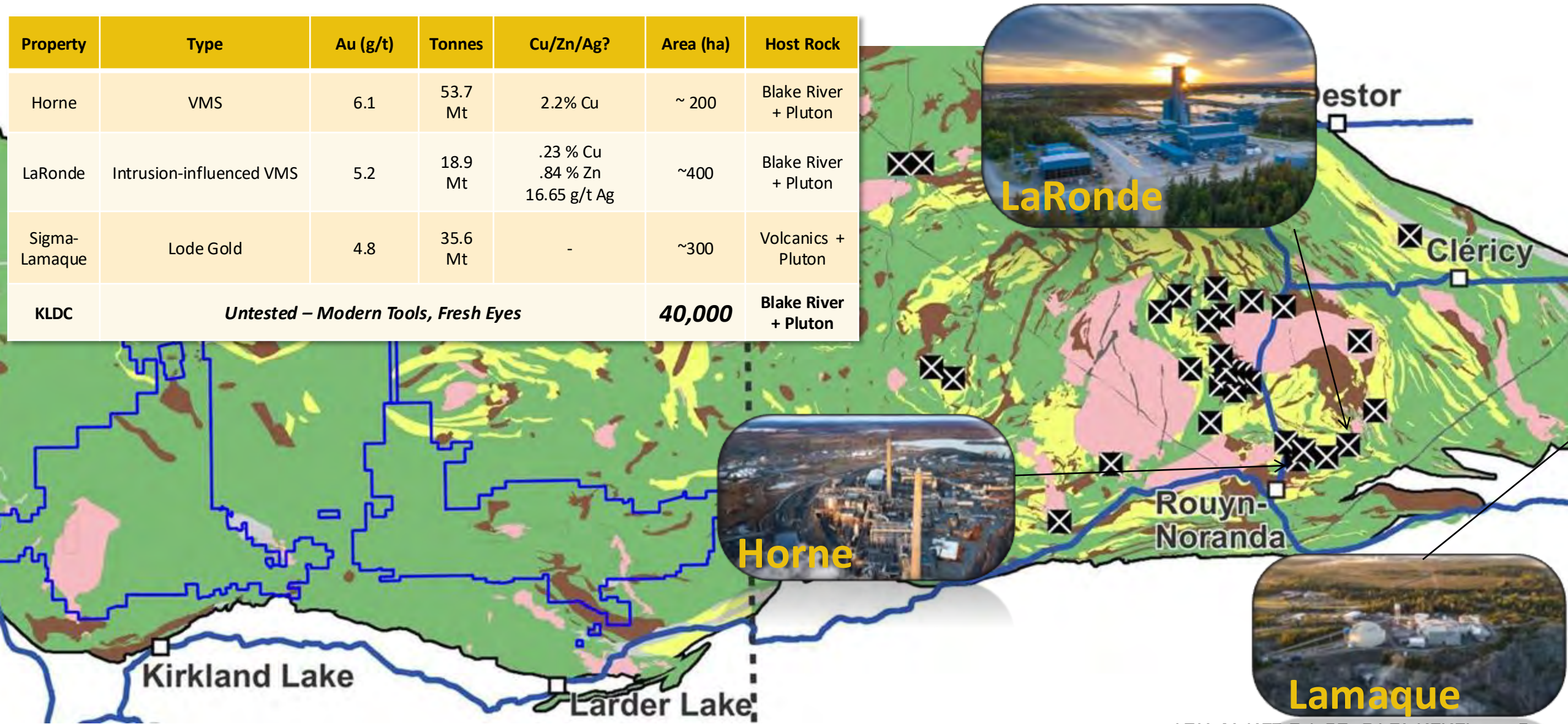


Québec Blake River Group Total Production Value in \$ CDN Billion

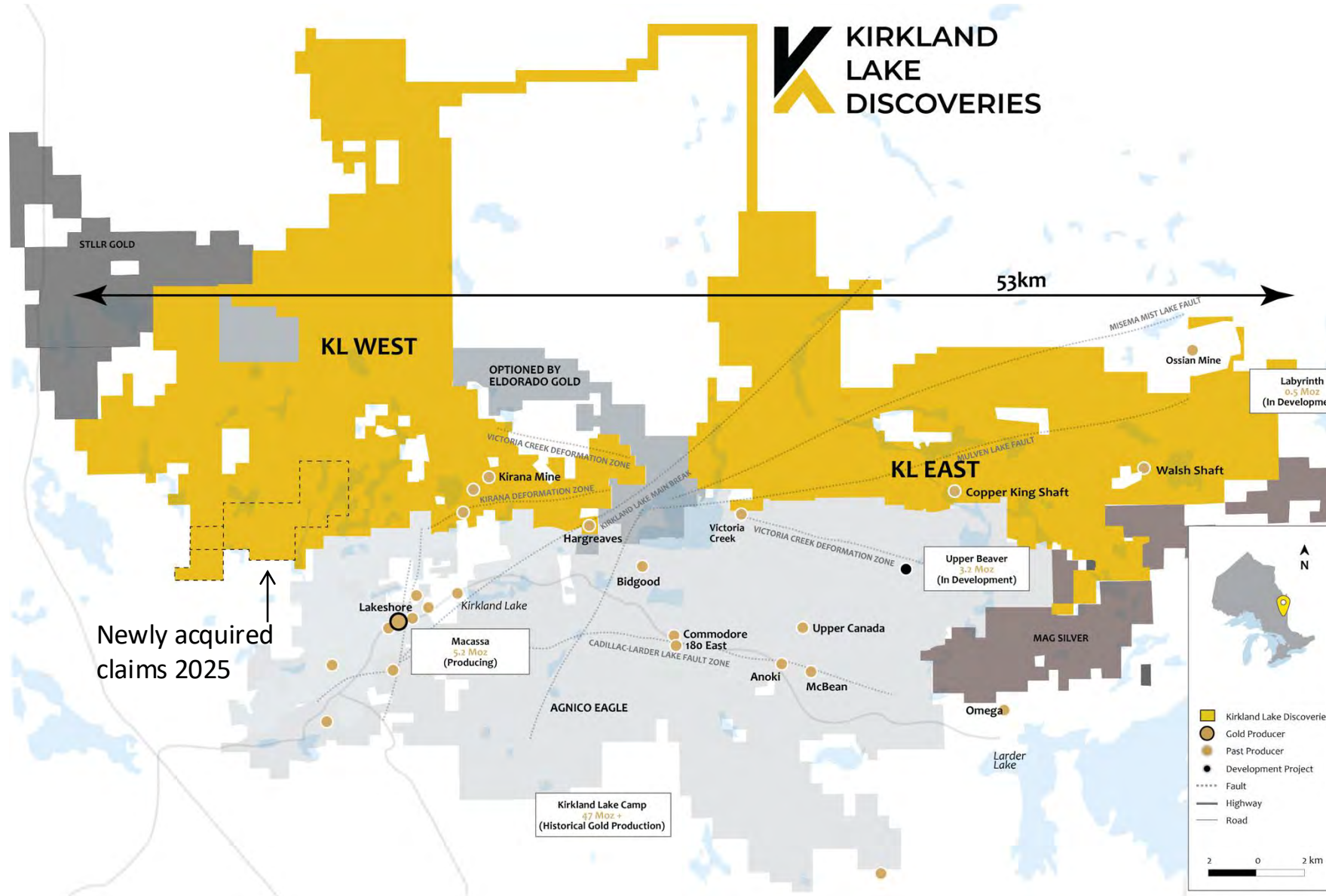


BLAKE RIVER GROUP: HOME TO GIANTS

Property	Type	Au (g/t)	Tonnes	Cu/Zn/Ag?	Area (ha)	Host Rock
Horne	VMS	6.1	53.7 Mt	2.2% Cu	~ 200	Blake River + Pluton
LaRonde	Intrusion-influenced VMS	5.2	18.9 Mt	.23 % Cu .84 % Zn 16.65 g/t Ag	~400	Blake River + Pluton
Sigma-Lamaque	Lode Gold	4.8	35.6 Mt	-	~300	Volcanics + Pluton
KLDC	Untested – Modern Tools, Fresh Eyes				40,000	Blake River + Pluton



THE LARGEST CONSOLIDATED LAND PACKAGE IN THE HISTORY OF THE CAMP



40,000 ha claim package in an established brownfields camp



Intrusive, Shear/Lode gold, and **VMS** signatures

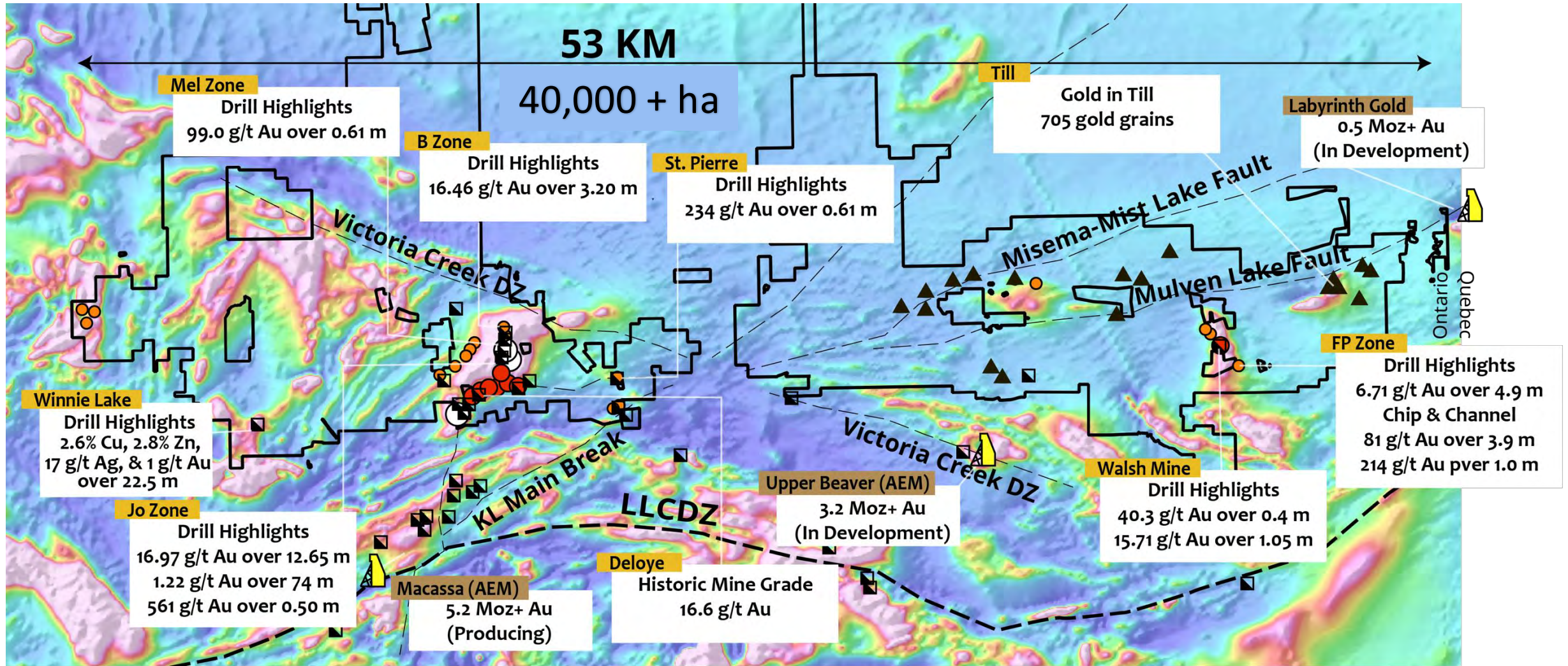


Property-scale soil grid to vector exploration



Ontario is a **Tier 1 Mining Friendly** Jurisdiction

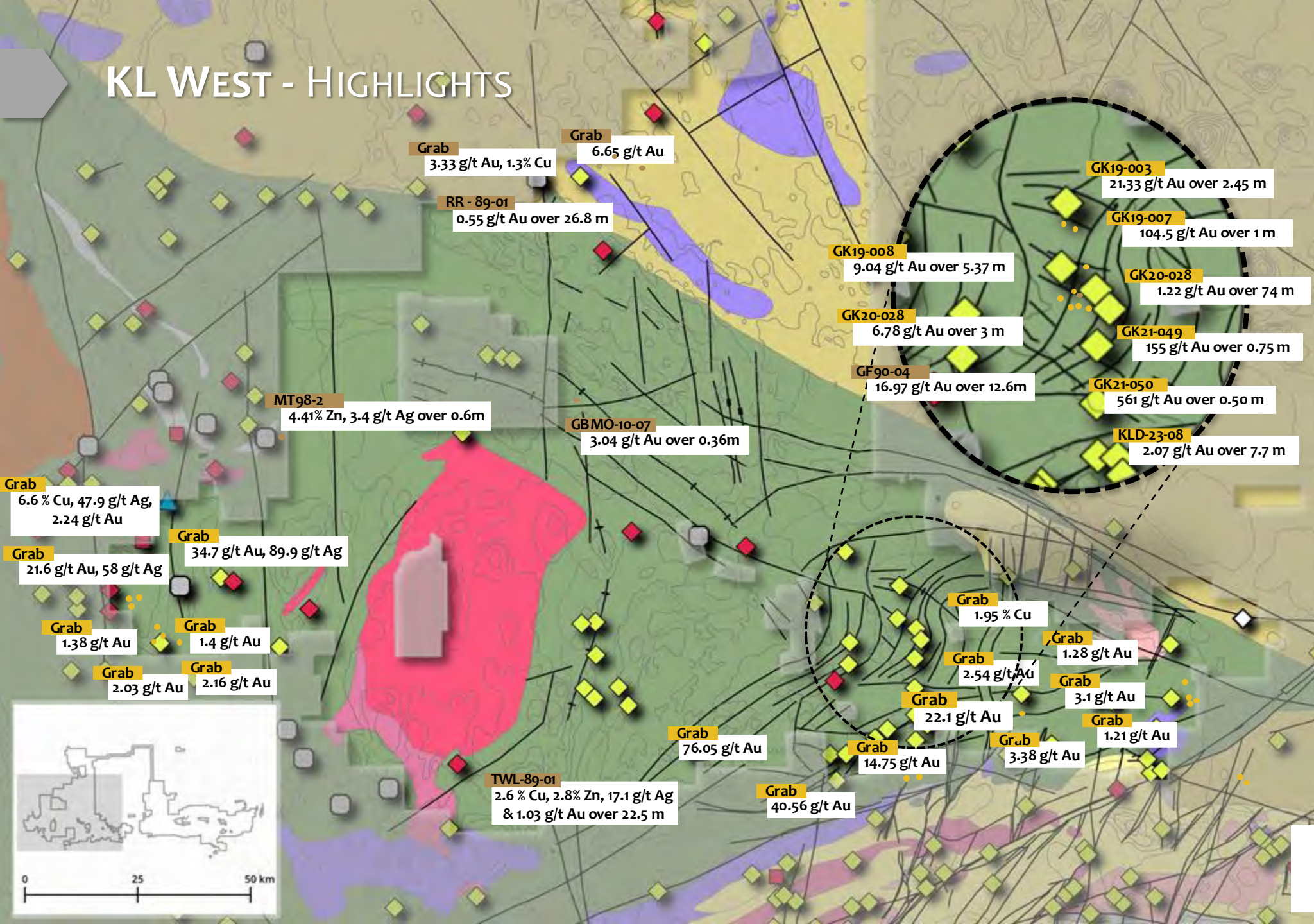
EXPLORING A DISTRICT RICH WITH MINERALIZATION



Legend

- | | | |
|---|--|---|
| <ul style="list-style-type: none"> ■ Past Producer ▲ Producing/ In Development --- Regional Structures | Grabs – Au <ul style="list-style-type: none"> ● 1.0-5.0 ppm ● 5.0 – 100 ppm ○ 100 – 2275 ppm | Tills Total Au Grain Count <ul style="list-style-type: none"> ▲ 48 - 187 ▲ 187 - 705 |
|---|--|---|

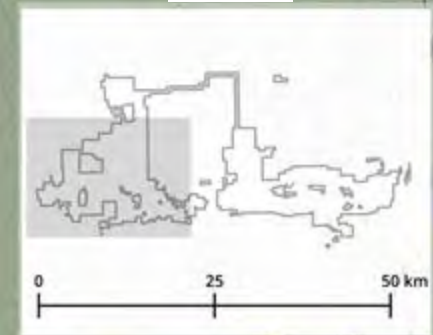
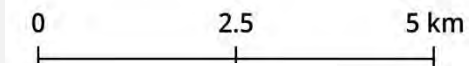
KL WEST - HIGHLIGHTS



- Mineral Occurrences**
- Gold
 - Copper (Intrusion Related)
 - Copper, Nickel (Magmatic Sulphide)
 - Polymetallic VMS
- Ontario Geological Survey Data**
- Fault
 - Anticline
 - Syncline
 - Syenite to monzonite
 - Massive granodiorite to granite
 - Foliated tonalite suite
 - Mafic and ultramafic rocks
 - Coarse clastic metasedimentary rocks
 - Metasedimentary rocks
 - Felsic to intermediate metavolcanic rocks
 - Mafic to intermediate metavolcanic rocks



NAD83 Zone 17N



KIRKLAND LAKE DISCOVERIES

Mineral Prospectivity Quantile

70th 80th 90th

Shear/Lode Gold



VMS



Intrusion-Related



Mineral Occurrences

Gold



Copper (Intrusion-Related)



Copper, Nickel (Magmatic Sulphide)



Polymetallic VMS



Ontario Geological Survey Data

Interpreted Fault



Anticline



Syncline



Syenite to monzonite



Massive granodiorite to granite



Foliated tonalite suite



Mafic and ultramafic rocks



Coarse clastic metasedimentary rocks



Metasedimentary rocks



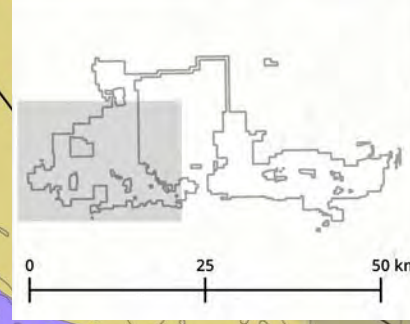
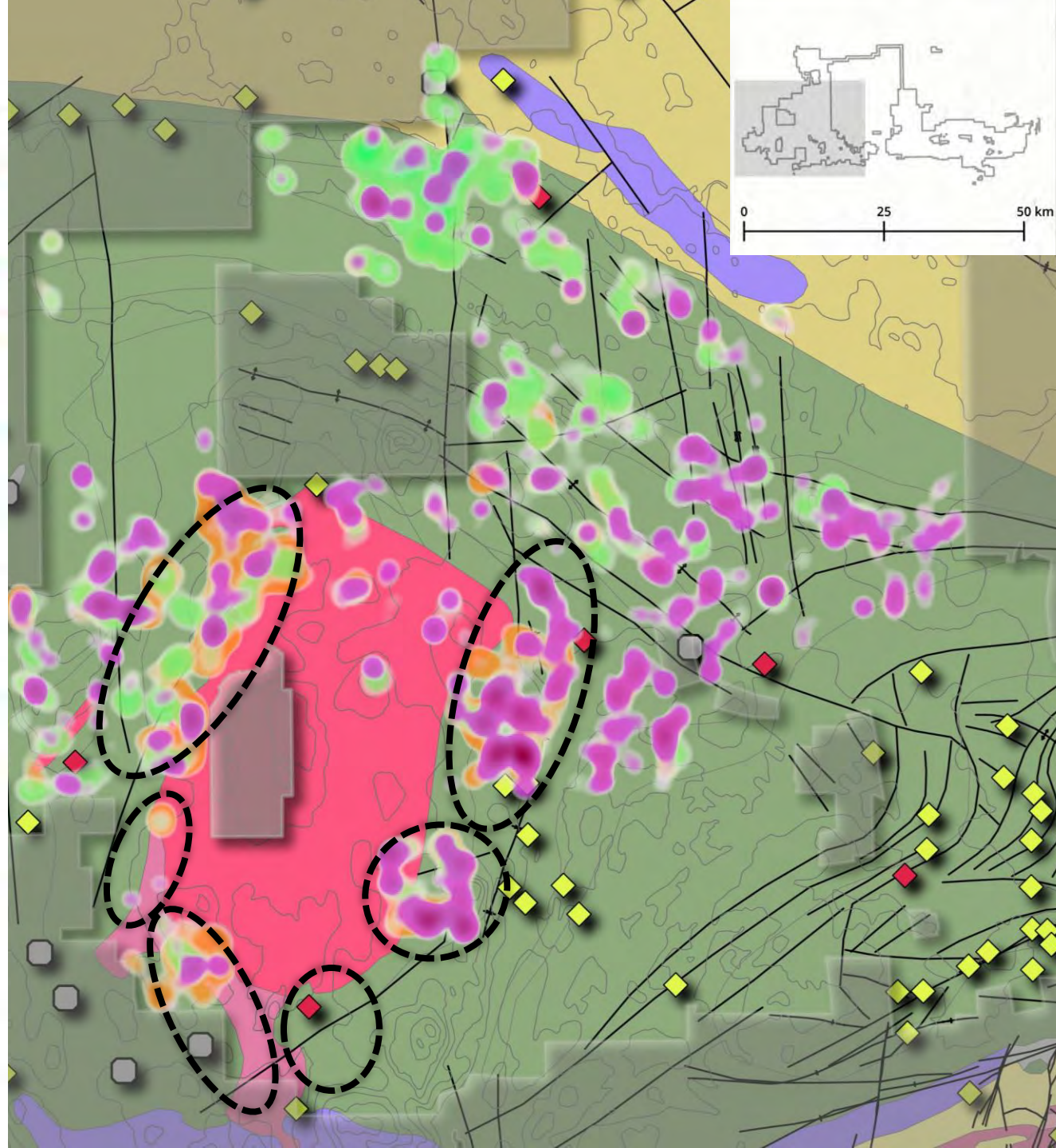
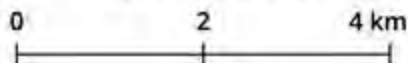
Felsic to intermediate metavolcanic rocks



Mafic to intermediate metavolcanic rocks



NAD83 Zone 17N



MINERALIZATION PROSPECTIVITY ON KL WEST 2024 SOILS

Shear/Lode Gold (Purple)

Indicative of structurally controlled gold mineralization trends.

VMS Potential (Green)

Areas with significant signatures for volcanogenic massive sulfide mineralization.

Intrusion-Related Mineralization (Orange)

Strongly associated with the massive granitoid intrusion, which appears to play a critical role in localizing mineralization trends.

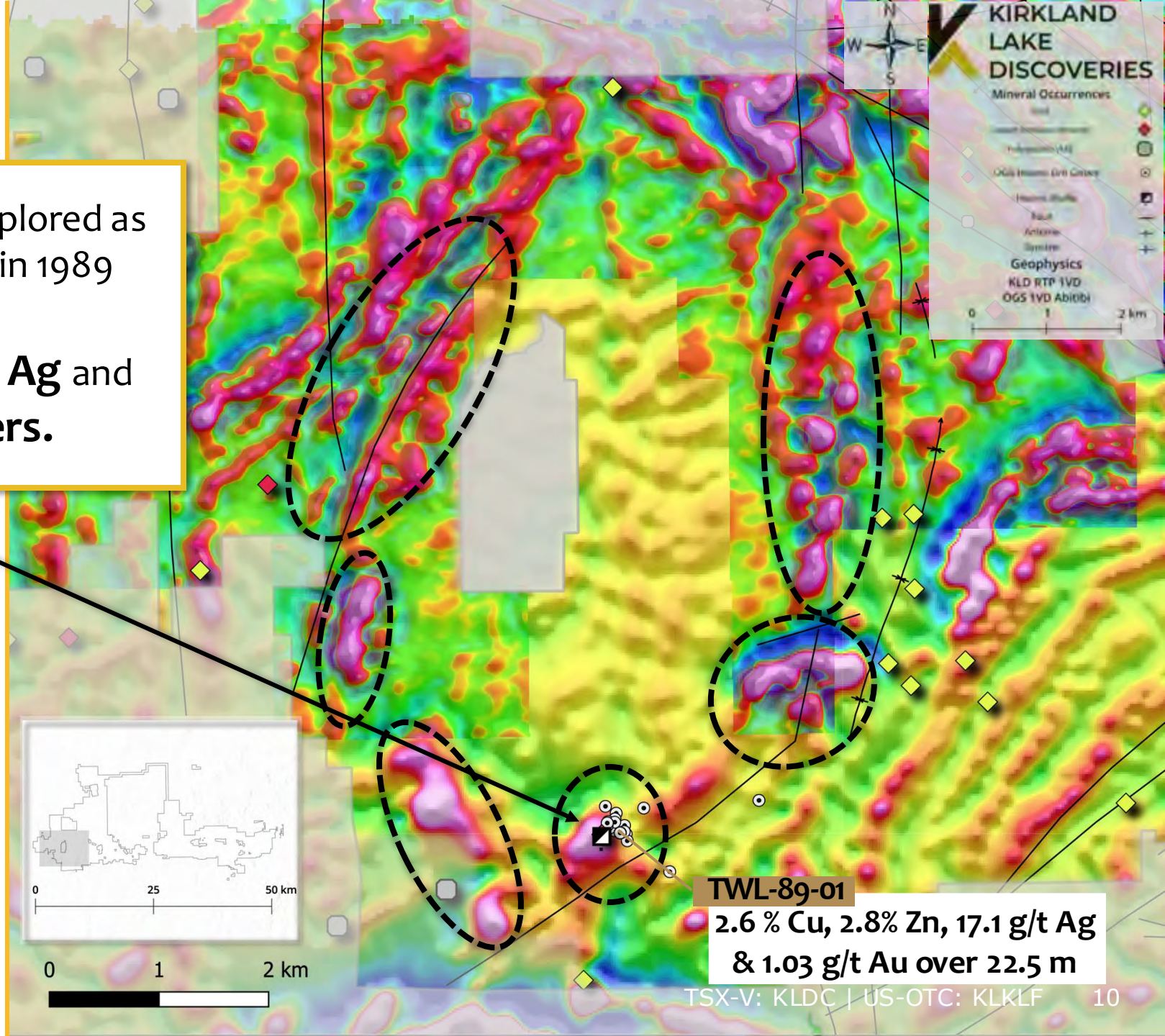
GEOPHYSICAL ANOMALIES

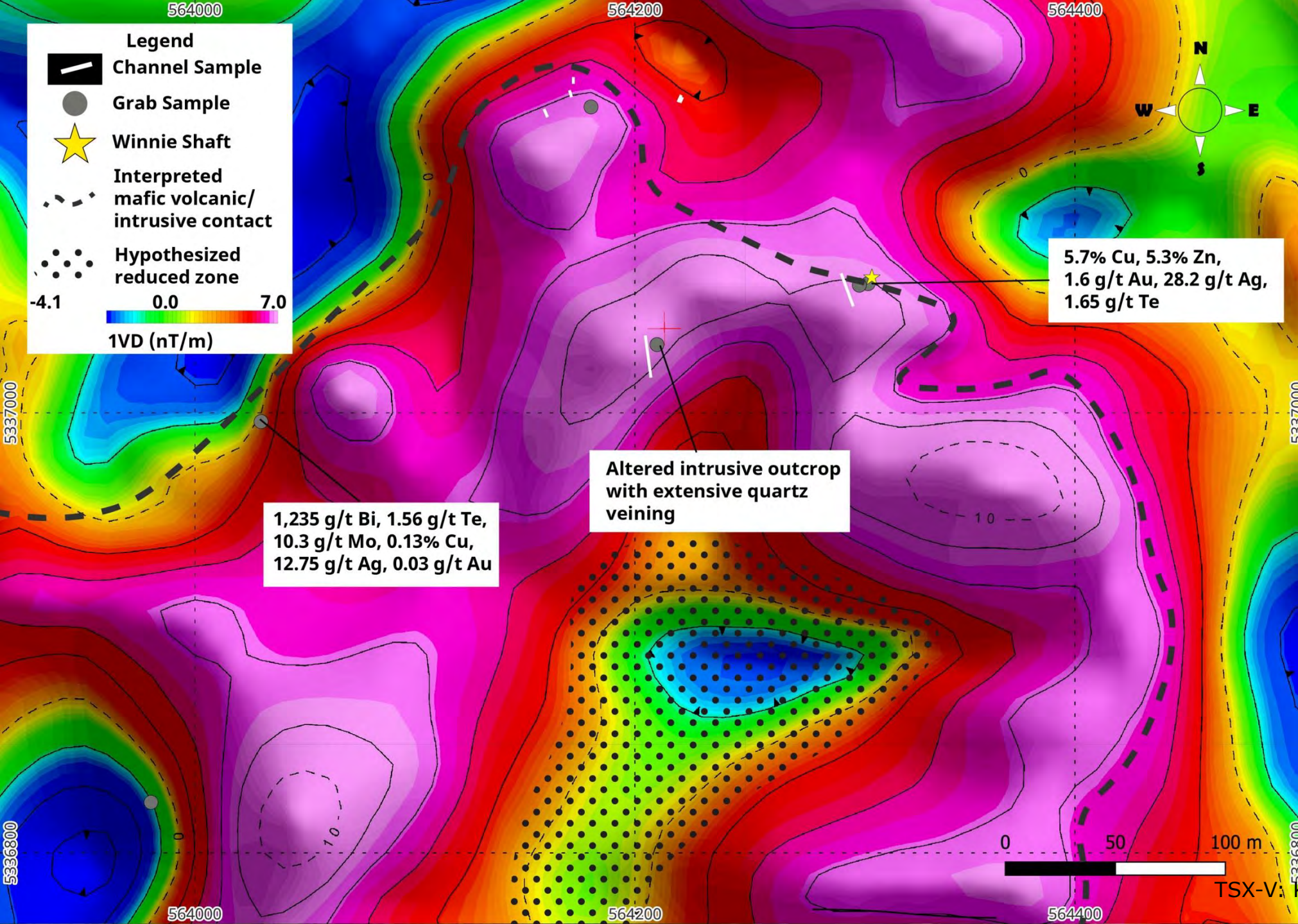
Winnie Lake Showing was explored as a **VMS**, with historical drilling in 1989 encountering grades of **2.6% copper, 2.8% zinc, 17.1 g/t Ag** and **1.03 g/t Au** over **22.5 meters**.

Soil sampling from 2024 indicates significant mineralization at the contact zone of the granite intrusion.

The **magnetic highs** around the granite intrusion indicate possible **mineralization similar to Winnie**, making these zones high-priority exploration targets and drilling.

Magnetic highs correlate with mineralization trends from 2024 geochemical survey





2025 FIELD UPDATE

High Grade Polymetallic

2025 grabs confirm high grade Cu, Zn with Au and Ag

Channel Sampling

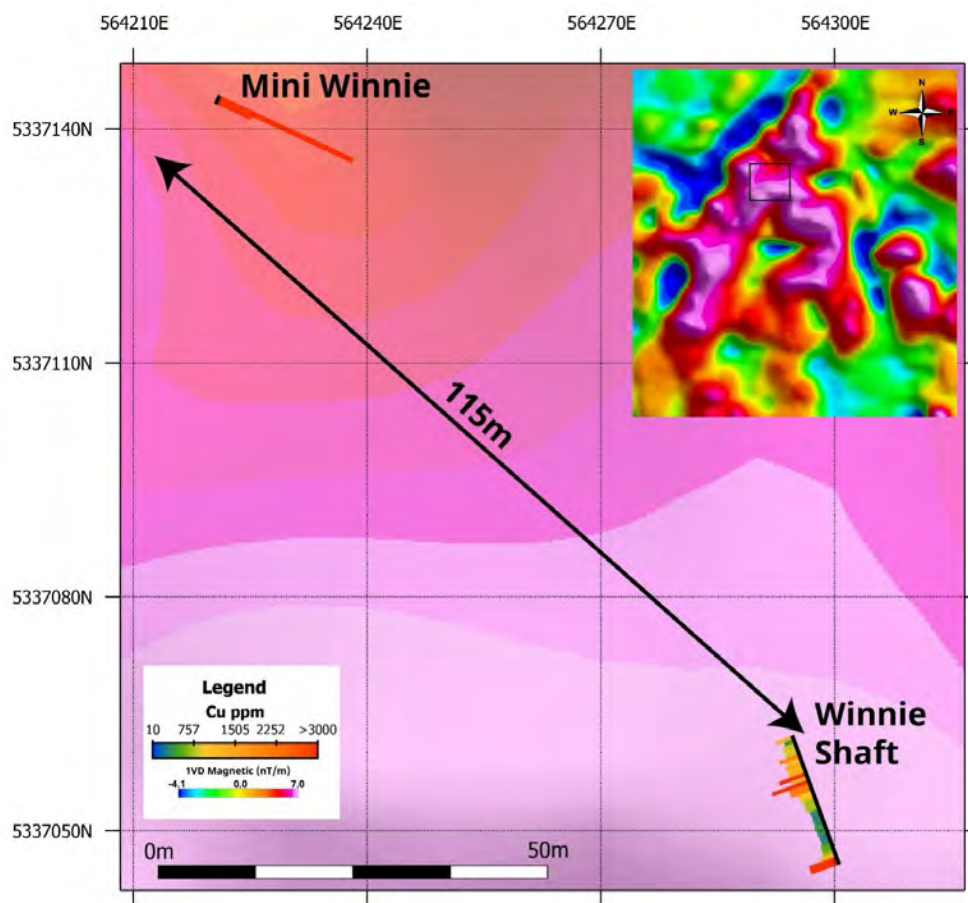
75 channel samples were collected including an altered intrusive with extensive parallel quartz veining, assays pending

Elevated Bi, Te, Mo

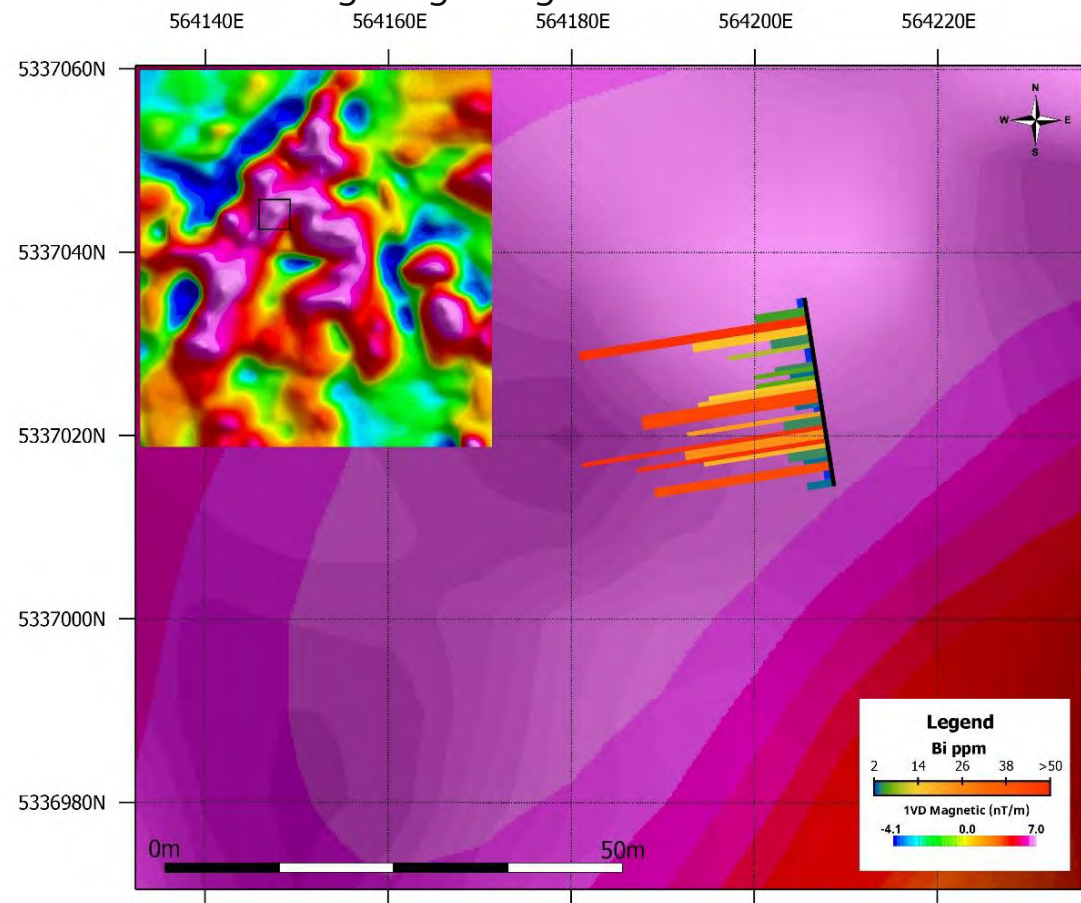
Indicate a fertile magmatic-hydrothermal system, characteristic of intrusion-related gold systems with bulk-tonnage potential

2025 FIELD UPDATE CONTINUED

Polymetallic semi-massive to massive sulphides at surface associated with massive magnetite, providing a strong magnetic signal to vector towards for mineralization.



Elevated bismuth in intrusive-related systems signals a pervasive, continuous mineralizing event. In Abitibi-style intrusive-related systems elevated Bi-Te-Au is widely documented as an effective pathfinder toward higher-grade gold.



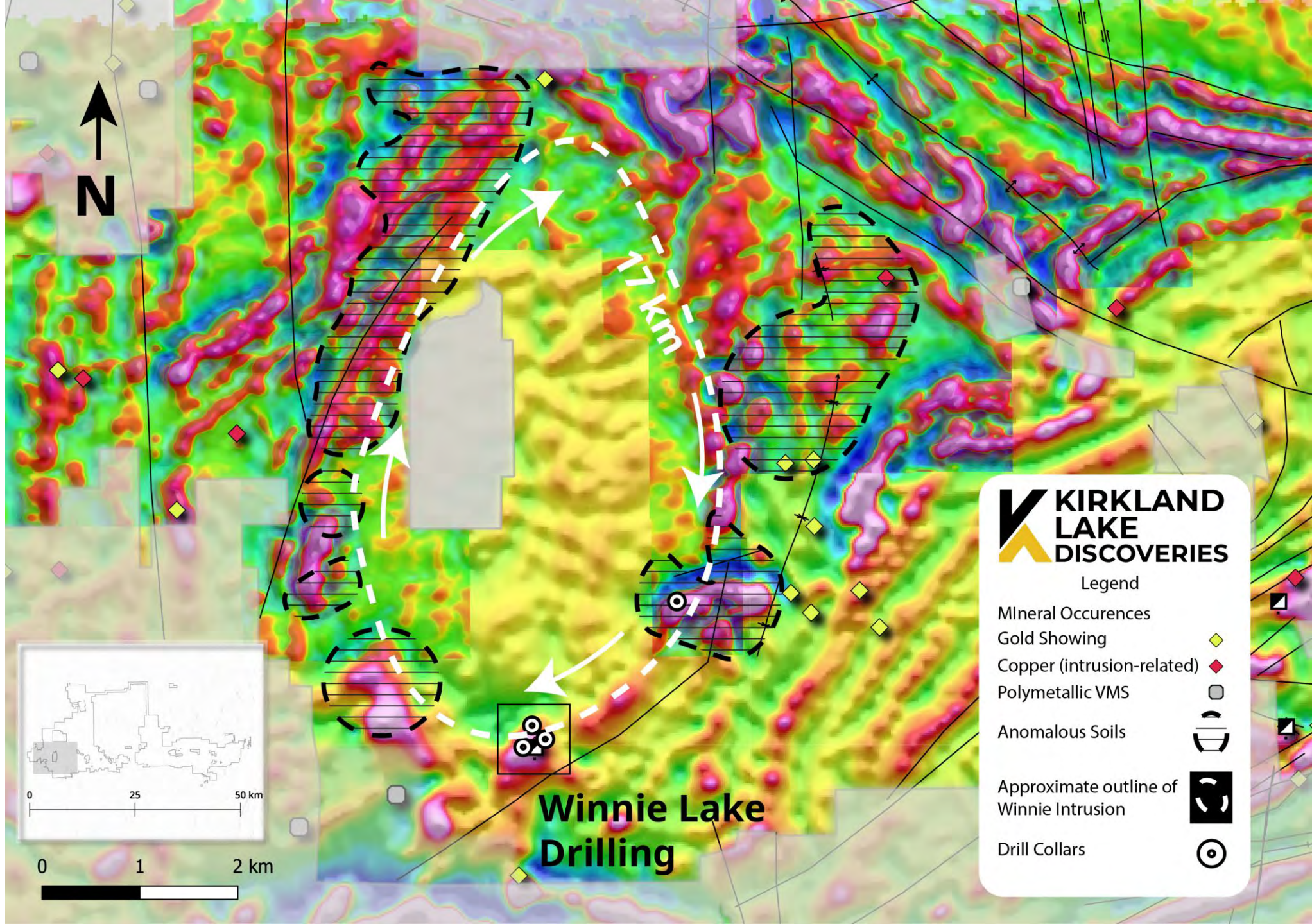
DISTRICT POTENTIAL

First Drill Holes

KLDC is the first company to drill-test the Winnie Intrusion with an intrusion-related mineralization model.

Unlocking District Potential

The contact of the Winnie Intrusion spans 17 km and KLDC controls all mining claims at that contact, providing discovery potential at a district scale.



2025 DRILLING UPDATE

Semi-Massive to Massive Sulphides

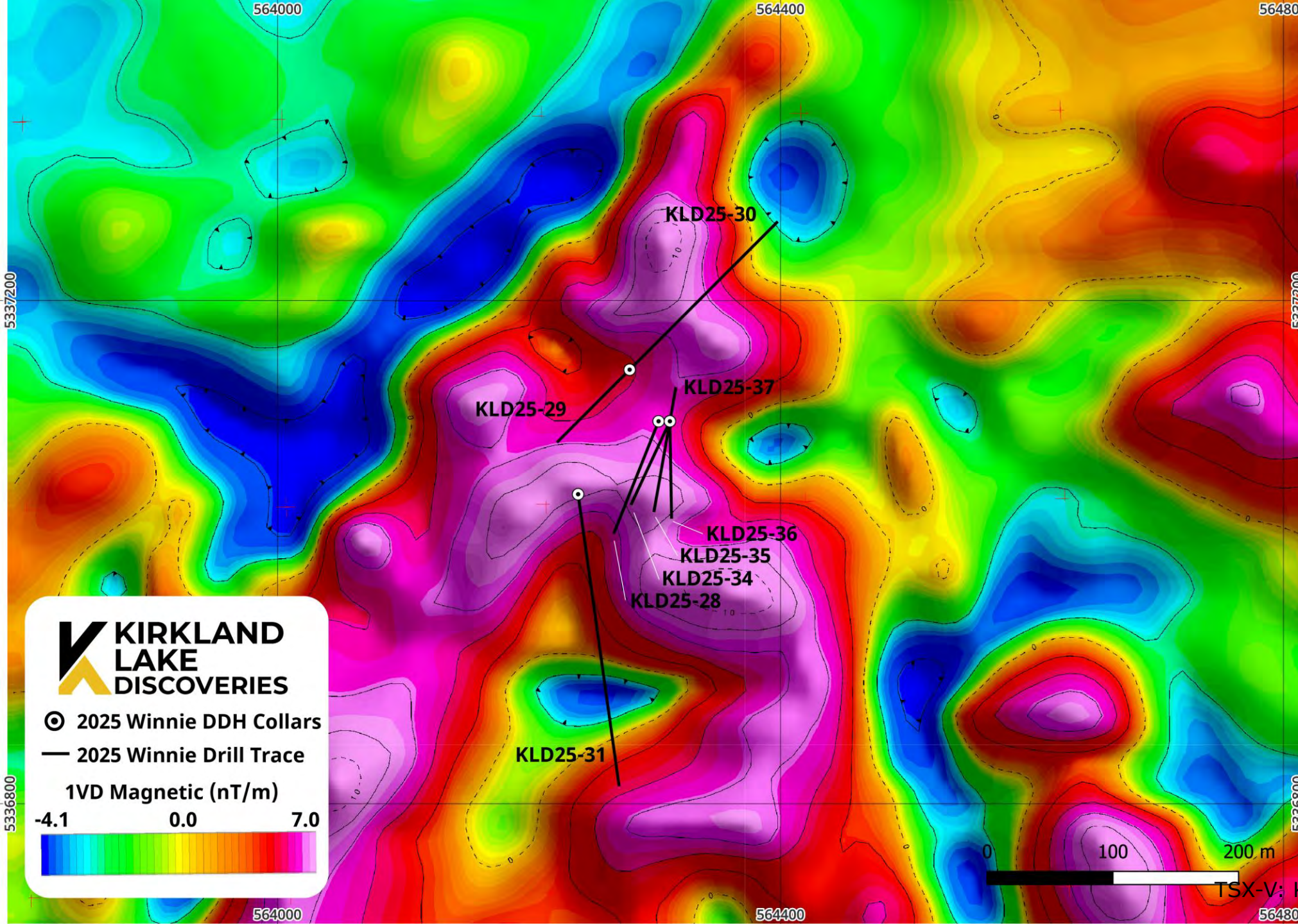
KLD 25-28, 34-36
intercepted multiple
zones of semi-massive
to massive sulphides.

Intrusion-Related

Massive sulphides were
associated with wide
halos of intense
silicification and
disseminated sulphides

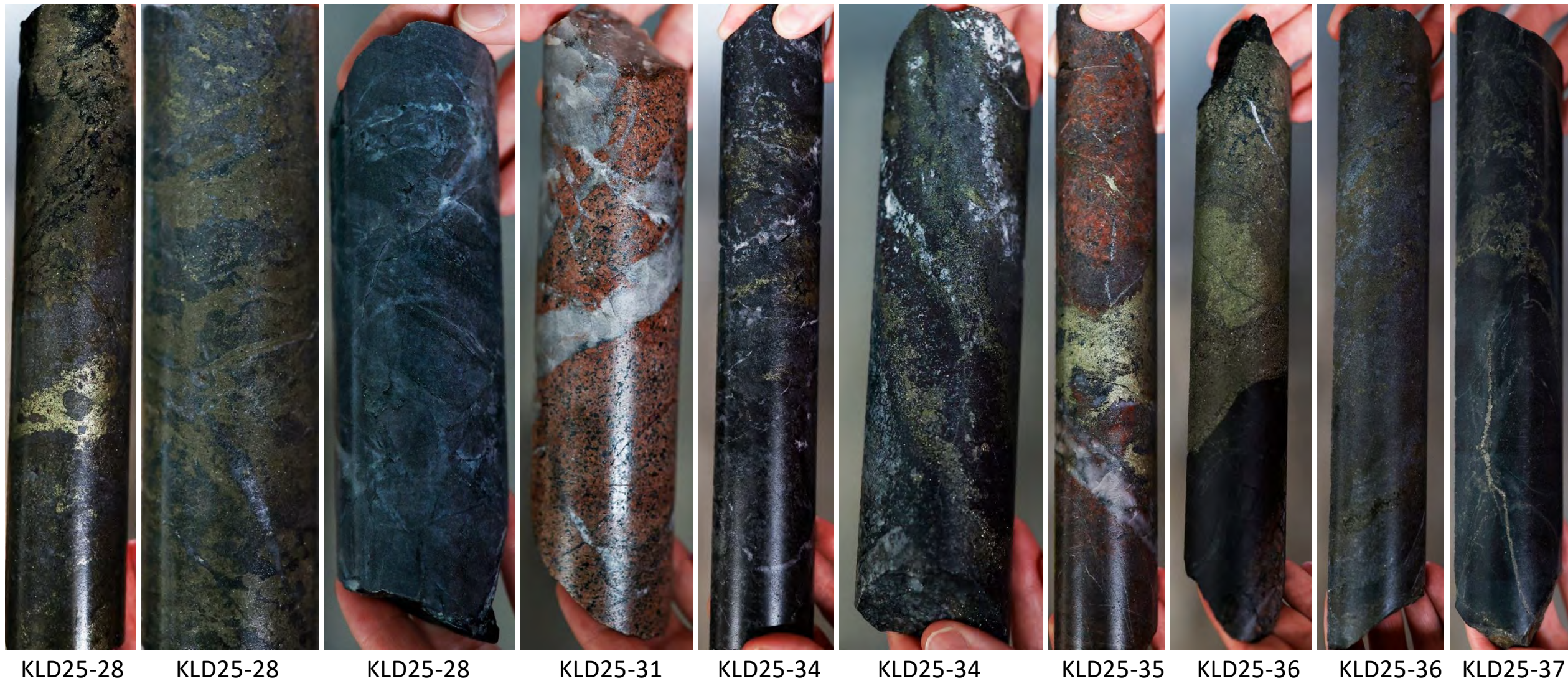
Deep System?

KLD25-37 intersected
mineralization from
97.5m downhole. All
assays pending.



DRILLING VISUALS – ASSAYS PENDING

See August 26 Press release for detailed description of drilling lithologies and mineralization

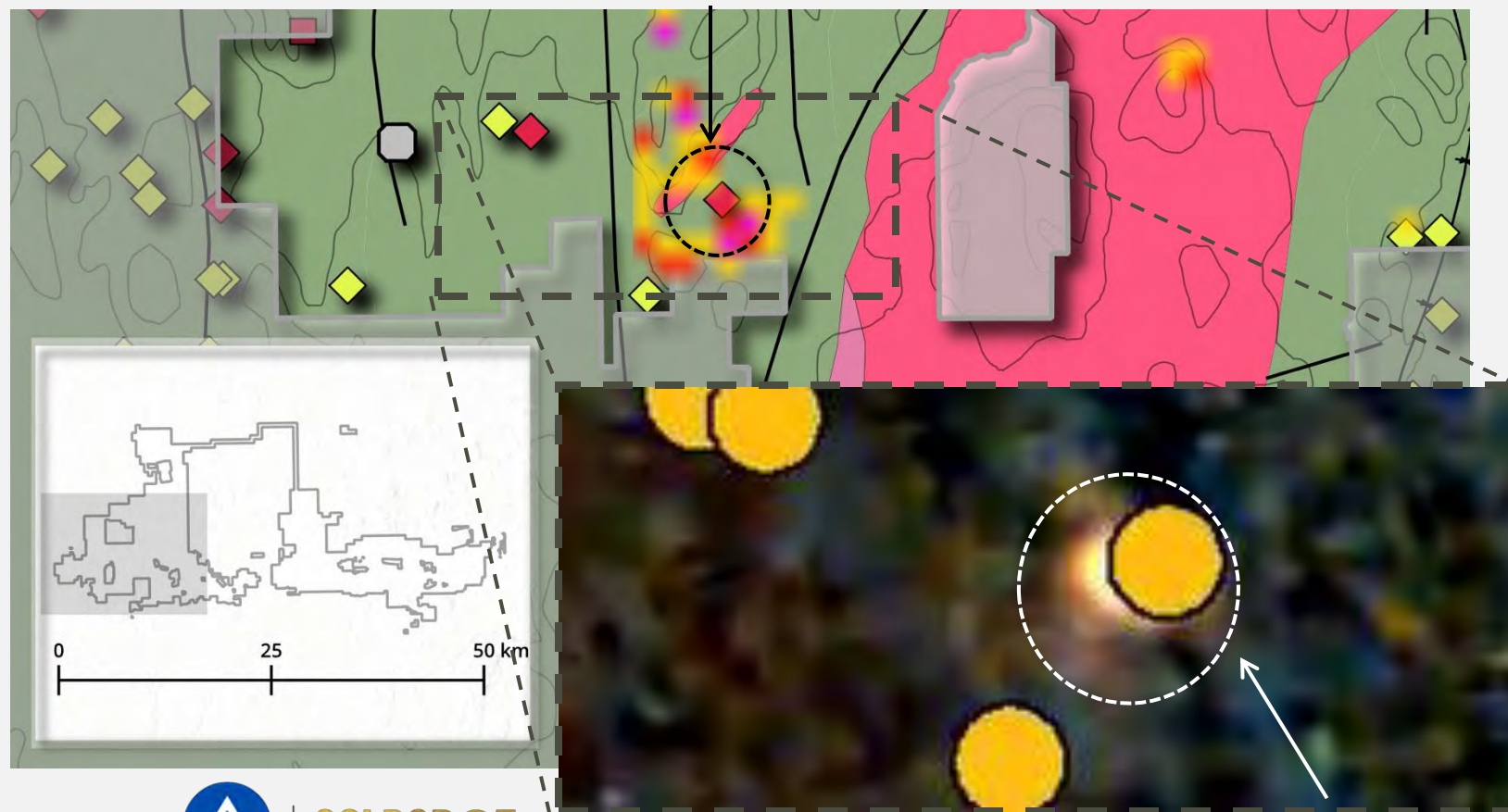


ANOMALY DETECTION USING AI AND HUMAN EXPERTS

Analysis of existing electromagnetic (EM) data shows a correlation of **chargeability highs** with elevated VMS prospectivity from soil analysis

ALS GoldSpot conducted anomaly pattern detection and matching from known mineralization on over **7,000-line km** of **EM data**. Combined with further analysis of geochemical data, magnetics and bedrock mapping provided prospective targets for ongoing exploration and drilling

Geochemical anomaly



AI Hot Spot for prospectivity/
EM anomaly

2025 EXPLORATION SUMMARY

COMPLETED WORK



1,700m drilling at KL West



Acquisition of Winnie Lake Property –
Exploration and drilling summer 2025



Mapping, Sampling, Channeling &
Prospecting



2025-26 EXPLORATION OUTLOOK



CATALYSTS



Mapping, sampling & prospecting
around Winnie Pluton at KL West
ongoing.



1000+ Assays from KLD25-28 to
KLD25-37 pending



Follow-up drilling at KL West and regional
drilling around Winnie Intrusion



Heli-MT survey to define intrusive
contact at depth for targeted drilling

KLDC TREASURE HUNT: A JOURNEY TO DISCOVERY

Behind-the-Scenes Access: Follow our journey as we unearth hidden potential—capturing every step, from fieldwork to drilling, through dynamic updates.

Join the Hunt: Weekly or bi-weekly videos will immerse you in the treasure hunt, revealing the highs, lows, and key decisions behind our discoveries.

Omniscient Storytelling: Each update offers a complete narrative, breaking down why and how we make critical decisions along the way.

Engaging and Transparent: Bite-sized content designed to inform, disclose, and entertain—experience the thrill of the hunt with KLDC as we chase our big discovery!



<https://www.youtube.com/@kirklandlakediscoveries>



EXPERIENCED BOARD OF DIRECTORS



**Denis
Laviolette**

Non-Executive Chairman

Mr. Laviolette has over 15 years of experience in mining and capital markets; worked as a production and exploration geologist in Northern Ontario (Timmins, Kirkland Lake and Red Lake), Norway and Ghana. Later worked as a mining analyst with Pinetree Capital. Founder, Director and Executive Chairman of EarthLabs Inc. (formerly GoldSpot Discoveries Corp.) (TSX.V: SPOT); Co-Founder, Director and President of New Found Gold Corp. (TSX.V: NFG); and serves as a Director for Xtra-Gold Resources Corp. (TSE: XTG) and Radio Fuels Energy Corp. (CNSX: CAKE).



**Gary
Nassif**

Director

Mr. Nassif is a professional geologist with 30+ years' experience in gold, base-metal and diamond exploration in Canada, United States and sub-Saharan Africa. He is the former Senior Vice President of Jerritt Canyon Gold, previously privately owned by Sprott Mining Inc. and recently acquired by First Majestic Silver Corp. He is also President & CEO of Argentum Silver Corp., a TSX-V listed explorer, and a director of Inventus Mining. He was previously Manager of Exploration Services for Kerr Mines, Northern Gold Mining, and Trelawney Mining & Exploration prior to its sale to IAMGOLD for \$608 million in 2012.



**Christina
McCarthy**

Director

Ms. McCarthy is a geologist with over 15 years of experience in the resource capital markets. Ms. McCarthy is the former President and CEO of Paycore Minerals Inc., recently acquired by i-80 Gold Corp for \$90 million. She previously held the position of Vice President of Corporate Development for New Oropu Resources Inc., which was acquired by Anacortes Mining Corp. in 2021. Ms. McCarthy served as Director of Corporate Development for McEwen Mining from 2014 to 2019. She spent the past 15 years in various roles, including management and board roles, equity research at Euro Pacific, and Institutional Sales at Haywood Securities, as well as building an exempt market dealer focusing on resources.



**Vincent
Dubé-Bourgeois**

Director

Vincent Dubé-Bourgeois is Co-Founder and President of EarthLabs Inc. and a board member at Harfang Exploration Inc. Under his leadership, EarthLabs sold the ExplorTech Division, including GoldSpot Discoveries, to ALS Limited for \$30 million. In 2015, at the Integra Gold Rush Challenge, Mr. Dubé-Bourgeois combined his machine learning and geology expertise to lead his team successfully to a share of the \$1 million prize. Mr. Dubé-Bourgeois was previously with the Ontario Geological Survey and Noront Resources Ltd. He holds a BSc in Geology from the University of Ottawa and is recognized for innovative contributions to data science and geoscience, particularly in mineral exploration.



PASSIONATE AND DISCOVERY-FOCUSED TEAM




Management


 **Stefan Sklepowicz**
CEO


 **Natalia Samartseva**
CFO

Technical Team

 **Mike Kilbourne**
Senior Project
Geologist

 **Drake Hyden**
Senior Project
Geologist

 **Bill Doerner**
Geophysical
Advisor

 **Danièle Spethmann**
Technical Advisor
Founder

CAPITAL STRUCTURE



114M

Shares Outstanding

\$18M

Market cap @ \$.16

8.3M

Options

14.5M

Warrants



Rob McEwen



Eric Sprott



NEWFOUND
GOLD CORP

\$1.5M

Cash



Kirklandlakediscoveries.com

FOR MORE INFORMATION

TSX-V: KLDC | US-OTC: KCLKF

STEFAN SKLEPOWICZ

Chief Executive Officer

stefan@kirklandlakediscoveries.com

+1 226 979 3515