

DISTRICT- SCALE DISCOVERY POTENTIAL

CORPORATE PRESENTATION | JANUARY 2026

TSX-V: KLDC | US-OTC: KKLFF



DISCLAIMER



This presentation contains certain forward-looking statements within the meaning of Canadian securities legislation (the “Forward-looking Statements”). The Forward-looking Statements relate to future events or Kirkland Lake Discoveries Corp. (“Kirkland Lake Discoveries” or “KLDC”), future performance, business prospects or opportunities. Any statements that express or involve discussions with respect to predictions, expectations, beliefs, plans, projections, objectives, assumptions or future events or performance (often, but not always, using words or phrases such as “seek”, “anticipate”, “plan”, “continue”, “estimate”, “expect”, “forecast”, “may”, “will”, “project”, “predict”, “potential”, “targeting”, “intend”, “could”, “might”, “should”, “believe”, “outlook” and similar expressions) are not statements of historical fact and may be Forward-looking Statements.

Forward-looking Statements in this presentation include, but are not limited to, statements with respect to KLDC’s future plans and exploration programs, including the timing of such plans and programs, and the merits of KLDC’s mineral properties.

Although Kirkland Lake Discoveries believes that these Forward-looking Statements are based on reasonable assumptions, all Forward-looking Statements involve known and unknown risks, uncertainties and other factors that may cause the actual results, performance, achievements, events, or circumstances of KLDC to be materially different than expressed or implied by the Forward-looking Statements. Such risks include, among others, uncertainties related to fluctuations in metal prices; uncertainties inherent in the exploration of mineral properties; risks associated with the interpretation of drilling results and other tests; changes in planned work resulting from weather, logistical, technical or other factors; the possibility that results of work will not fulfill expectations and realize the perceived potential of KLDC’s mineral properties; the possibility that required permits may not be obtained in a timely manner or at all; risk of accidents, equipment breakdowns or other unanticipated difficulties or interruptions; the possibility of cost overruns or unanticipated expenses in work programs; the risk of environmental contamination or damage resulting from the exploration operations; the need to comply with

environmental and governmental regulations; and the availability, or lack thereof, of capital and financing.

These Forward-looking Statements speak only as of the date of this presentation. Except as required by applicable securities laws, KLDC undertakes no obligation to update these Forward-looking Statements if management’s beliefs, estimates or opinions, or other factors, should change.

For more information on Kirkland Lake Discoveries, readers should refer to KLDC’s website at www.kirklandlakediscoveries.com.

QUALIFIED PERSON

Mike Kilbourne, P.Geo., senior geologist and independent contractor, who is a Qualified Person as defined in National Instrument 43-101, Standards of Disclosure for Mineral Projects, has reviewed and approved the technical content of this presentation on behalf of the Company.

THE BILLION DOLLAR BLUEPRINT



\$1.8B Sale



GREAT BEAR
RESOURCES



\$1.5B Peak

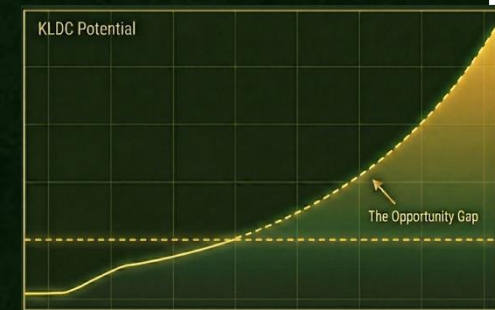



NEWFOUNDGOLD

**PROVEN GEOLOGY
DISTRICT SCALE
WELL CAPITALIZED
AGGRESSIVE DRILLING
MARKET AWARENESS**



\$50M Market Cap



**KIRKLAND
LAKE
DISCOVERIES**

PROVEN GEOLOGY



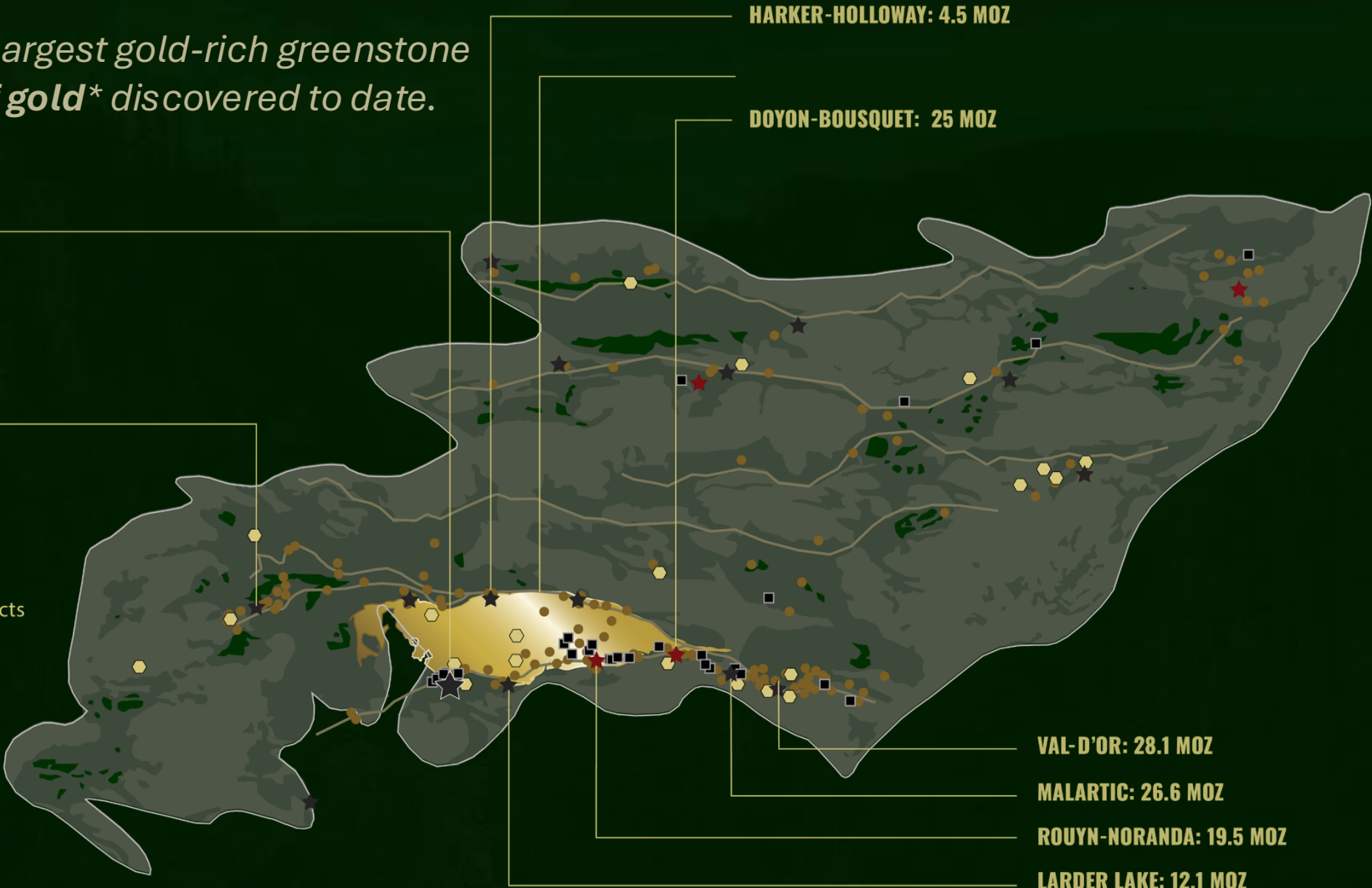
The Abitibi is the world's largest gold-rich greenstone belt with over **300 Moz of gold*** discovered to date.

KIRKLAND LAKE
30.7 MOZ

TIMMINS: 76.8 MOZ

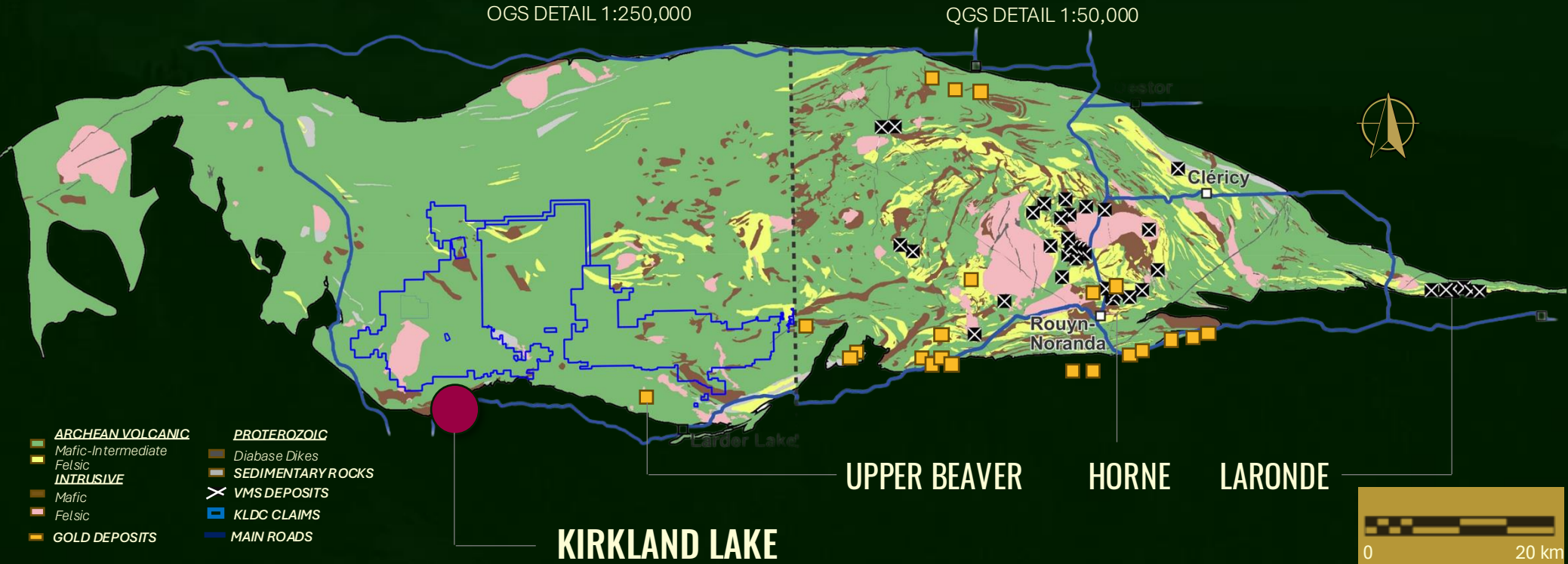
- ★ Gold camps, past production
- ★ Gold camps, endowment
- ⬢ Active precious metals exploration projects
- Past Mines
- Gold Deposits
- Deformation Zones
- ▬ Blake River Group

Source: Natural Resources Canada, Midland Exploration, Maple Gold, Hecla Mining Co., Kirkland Lake Gold, CBay Minerals, Pasofino Gold, Detour Lake Technical Report, Visual Capitalist. *The total gold content of the belt, including past production and current reserves/resources.



BLAKE RIVER GROUP – ONTARIO’S SLEEPING GIANT?

Québec Blake River Group
Total Production
Value (\$CDN B)



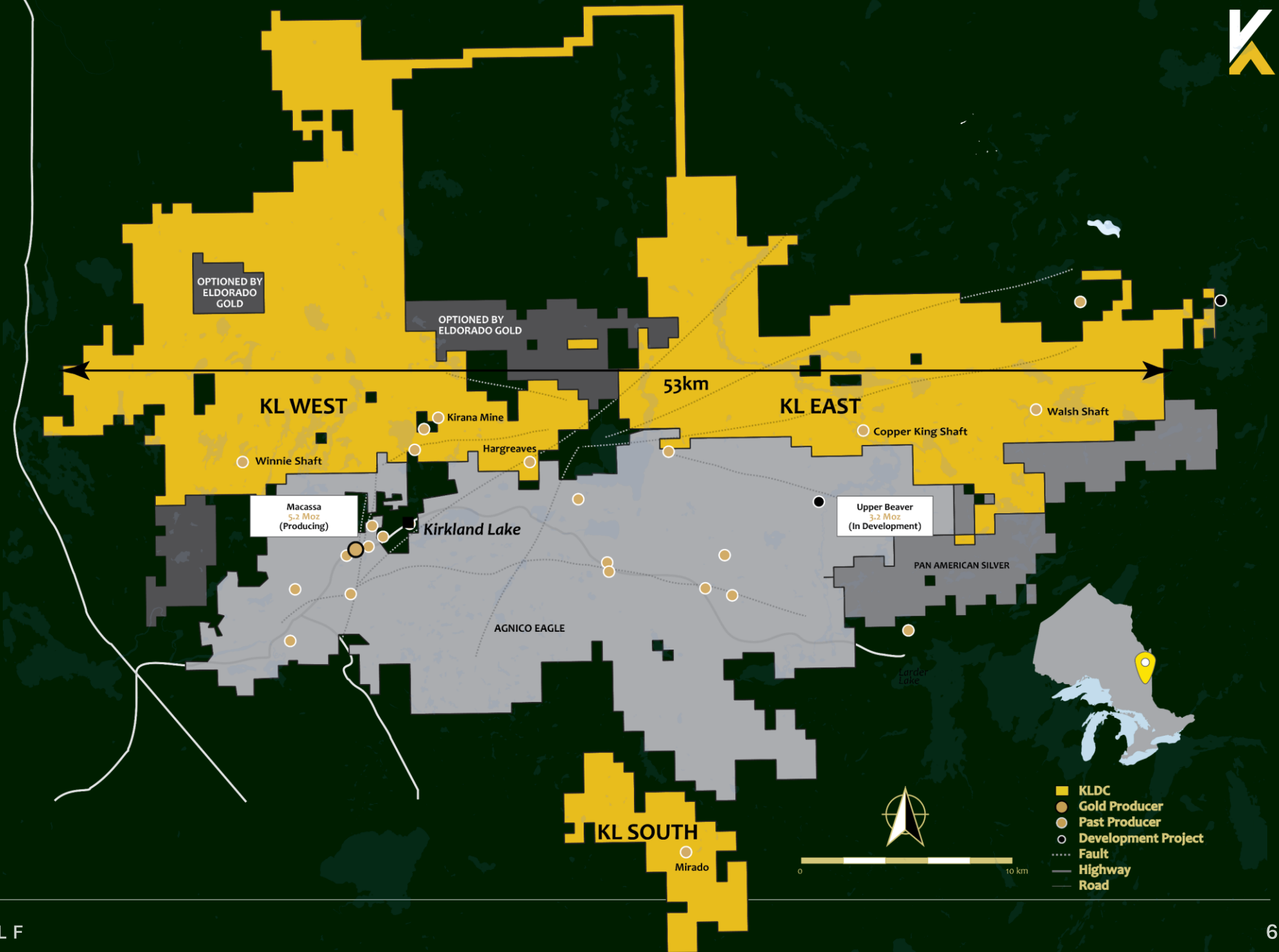
PROPERTY	Type	Au (g/t)	Tonnes	Cu/Zn/Ag	Hectares	Host Rock
HORNE	VMS	6.1	53.7 Mt	2.2% Cu	~ 200	Blake River + Pluton
LARONDE	Intrusion-Influenced VMS	5.2	18.9 Mt	0.23 % Cu 0.84 % Zn 16.65 g/t Ag	~400	Blake River + Pluton
UPPER BEAVER	Intrusion-Related Copper Gold	3.71	23.2 Mt	0.24% Cu	~600	Blake River + Pluton
KLDC	UNTESTED – MODERN TOOLS, FRESH EYES			40,000	Blake River + Pluton	

Located in one of the world's most well-known mining belts, our property covers a significant area of geologically promising ground.

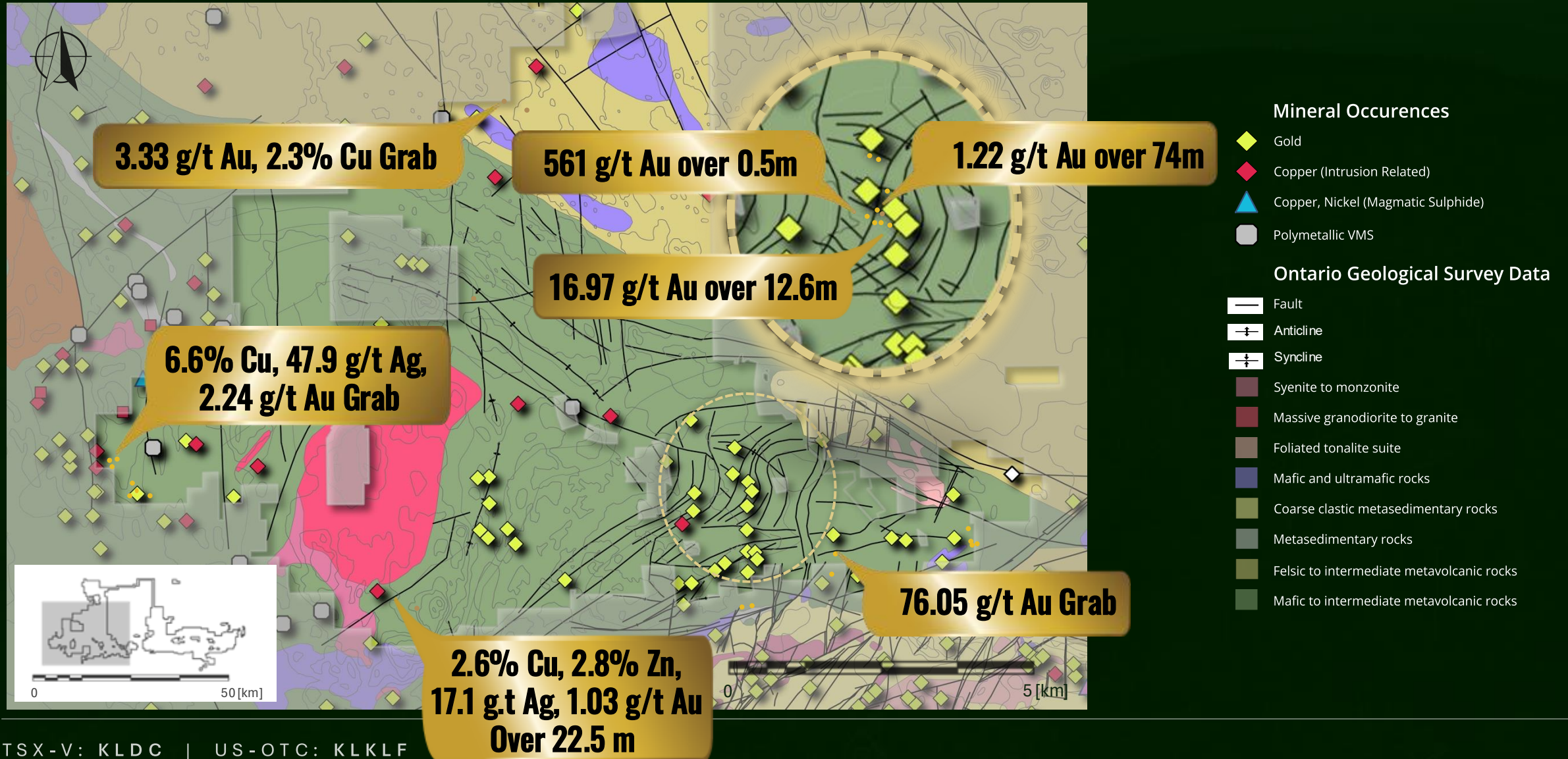
The scale of our land package allows us to apply modern exploration techniques across the entire property, targeting areas that have not been fully explored in the past.

Key Highlights:

- 40,000 ha in established brownfields camp
- Intrusive, orogenic & VMS signatures of mineralization
- Property-scale exploration completed to vector to mineralization
- Ontario is a Tier-1 mining friendly jurisdiction
- Historical gold production in Kirkland Lake Camp is over 47 million ounces



KIRKLAND LAKE WEST: HIGH-GRADE CONFIRMED



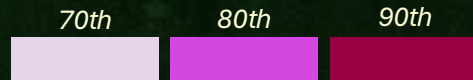
MINERALIZATION PROSPECTIVITY ON KL WEST 2024 SOILS



MINERAL PROSPECTIVITY QUANTILE

OROGENIC GOLD

Indicative of structurally controlled gold mineralization trends.



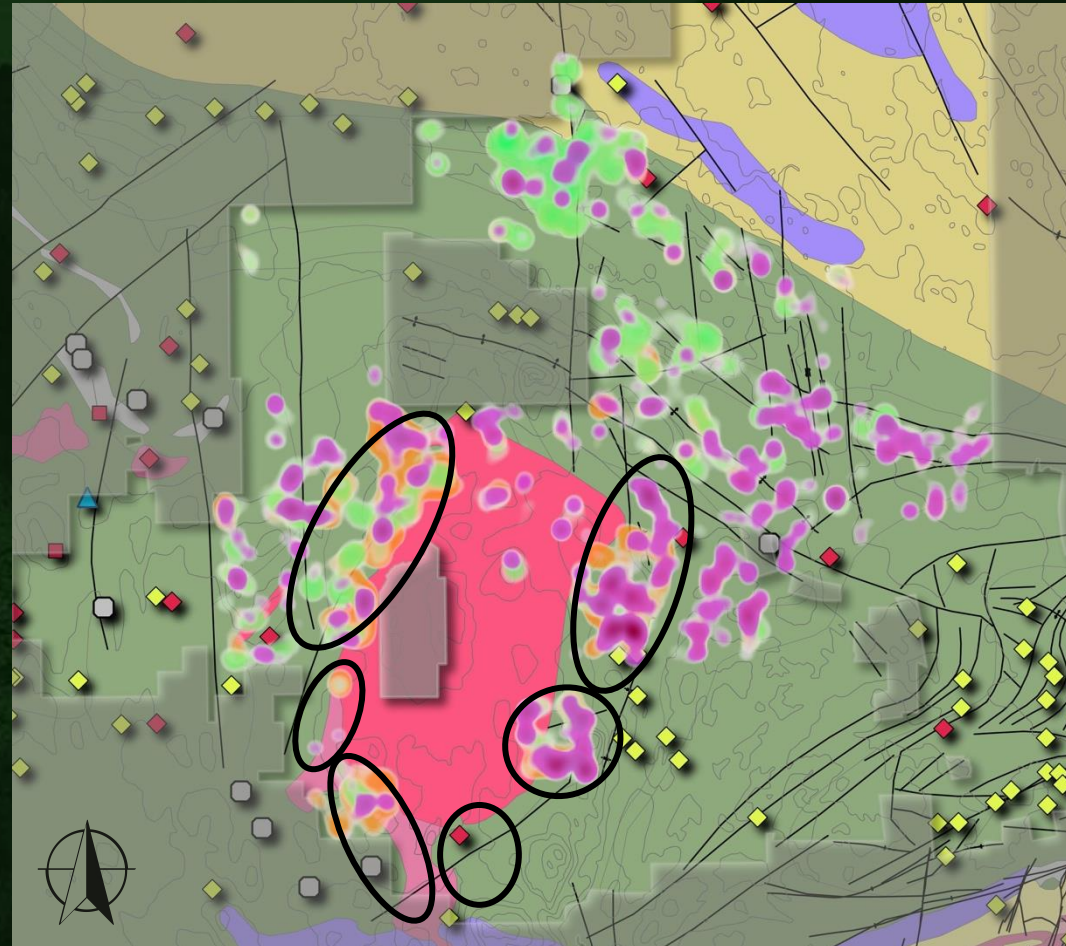
VMS POTENTIAL

Areas with significant signatures for volcano-genic massive sulfide mineralization.



INTRUSION-RELATED MINERALIZATION

Strongly associated with the massive granitoid intrusion, which appears to play a critical role in localizing mineralization trends.



Mineral Occurrences

- Gold
- Copper (Intrusion Related)
- Copper, Nickel (Magmatic Sulphide)
- Polymetallic VMS

Ontario Geological Survey Data

- Fault
- Anticline
- Syncline
- Syenite to monzonite
- Massive granodiorite to granite
- Foliated tonalite suite
- Mafic and ultramafic rocks
- Coarse clastic metasedimentary rocks
- Metasedimentary rocks
- Felsic to intermediate metavolcanic rocks
- Mafic to intermediate metavolcanic rocks

NAD83 Zone 17N

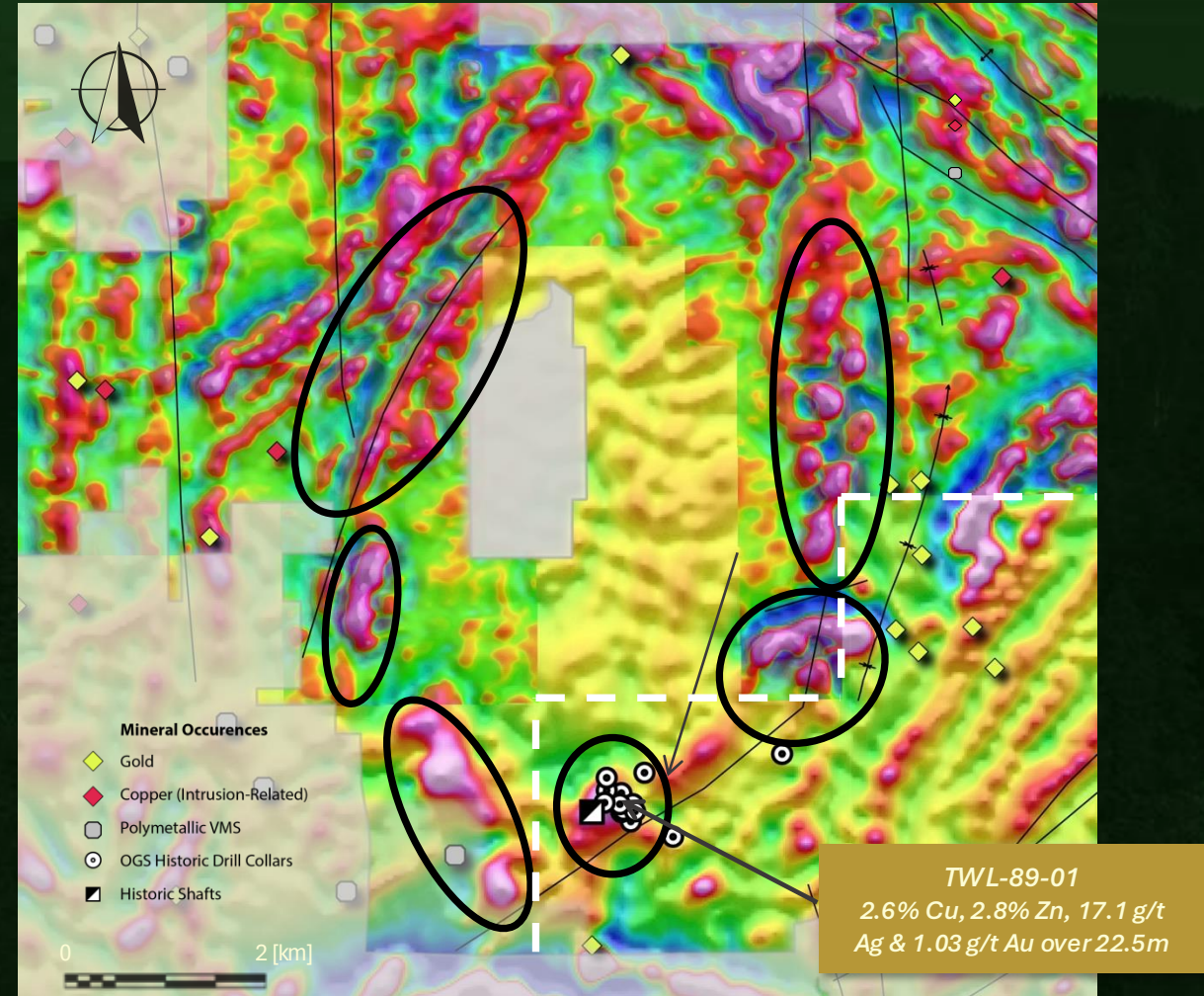


GEOPHYSICAL ANOMALIES

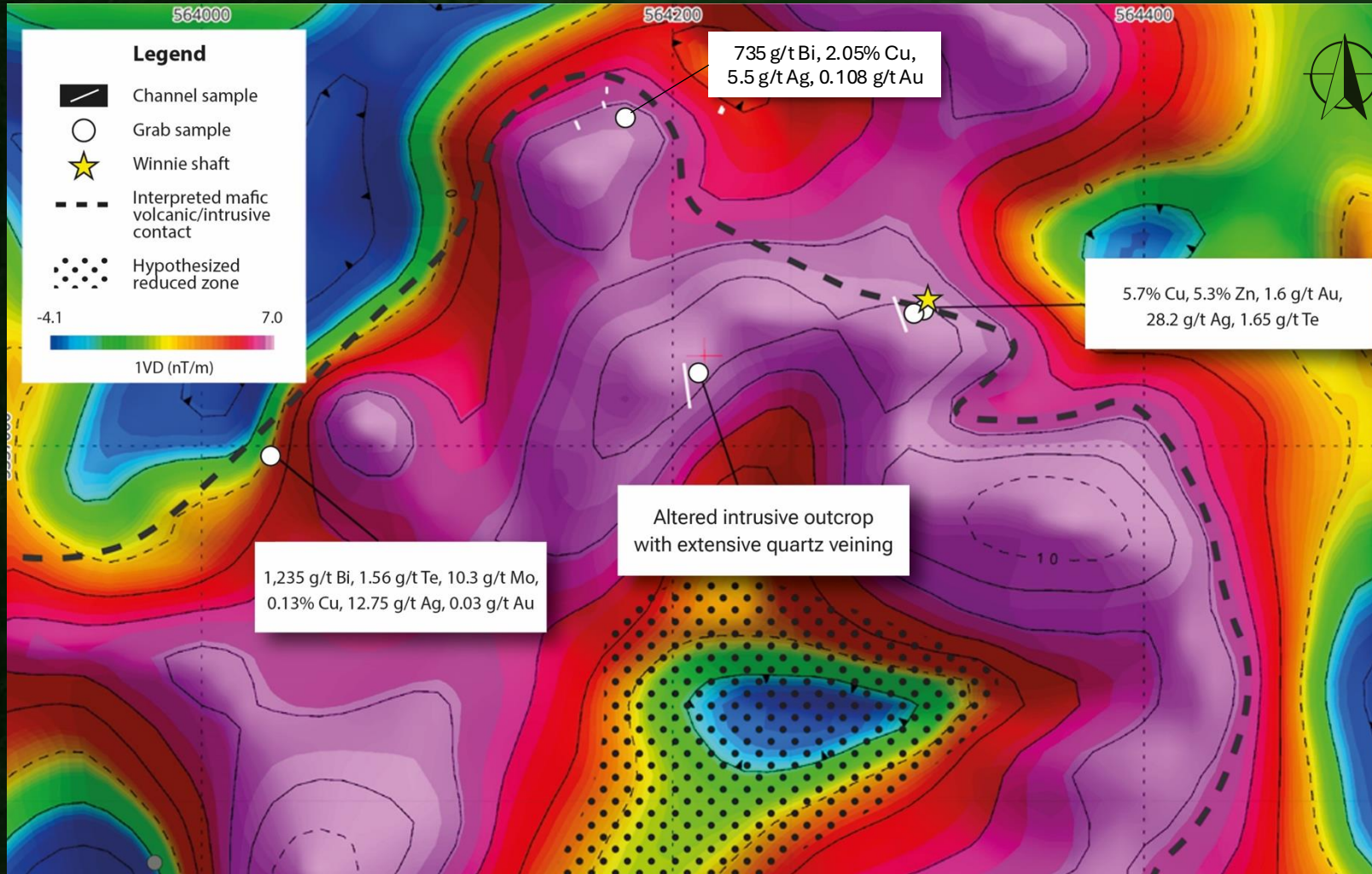


Winnie Lake Showing was explored as a VMS, with historical drilling in 1989 encountering grades of 2.6% copper, 2.8% zinc, 17.1 g/t Ag and 1.03 g/t Au over 22.5 m.

- Soil sampling from 2024 indicates significant mineralization at the contact zone of the granite intrusion.
- The magnetic highs around the granite intrusion indicate possible mineralization similar to Winnie, making these zones high-priority exploration and drilling targets.
- Magnetic highs correlate with mineralization trends from 2024 geochemical survey.



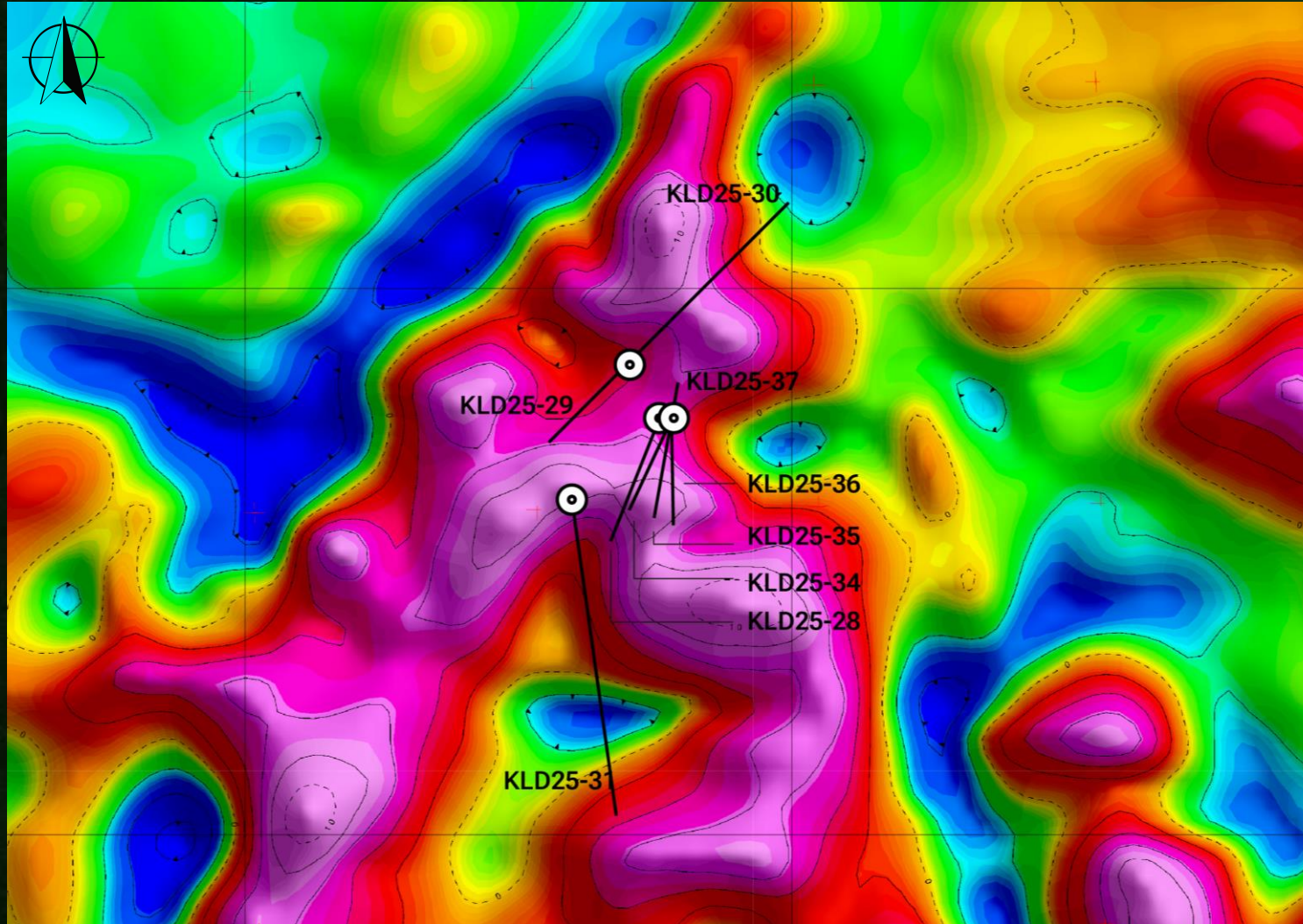
SUMMER FIELD UPDATE



HIGHLIGHTS

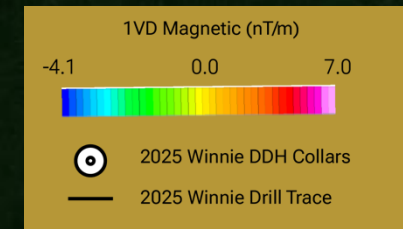
- **HIGH GRADE POLYMETALLIC**
2025 grabs confirm high grade Cu, Zn with Au and Ag.
- **CHANNEL SAMPLING**
75 channel samples were collected including an altered intrusive with extensive parallel quartz veining.
- **ELEVATED Bi, Te, Mo**
Indicate a fertile magmatic-hydrothermal system, characteristic of intrusion-related gold systems with bulk-tonnage potential.

2025 DRILLING UPDATE

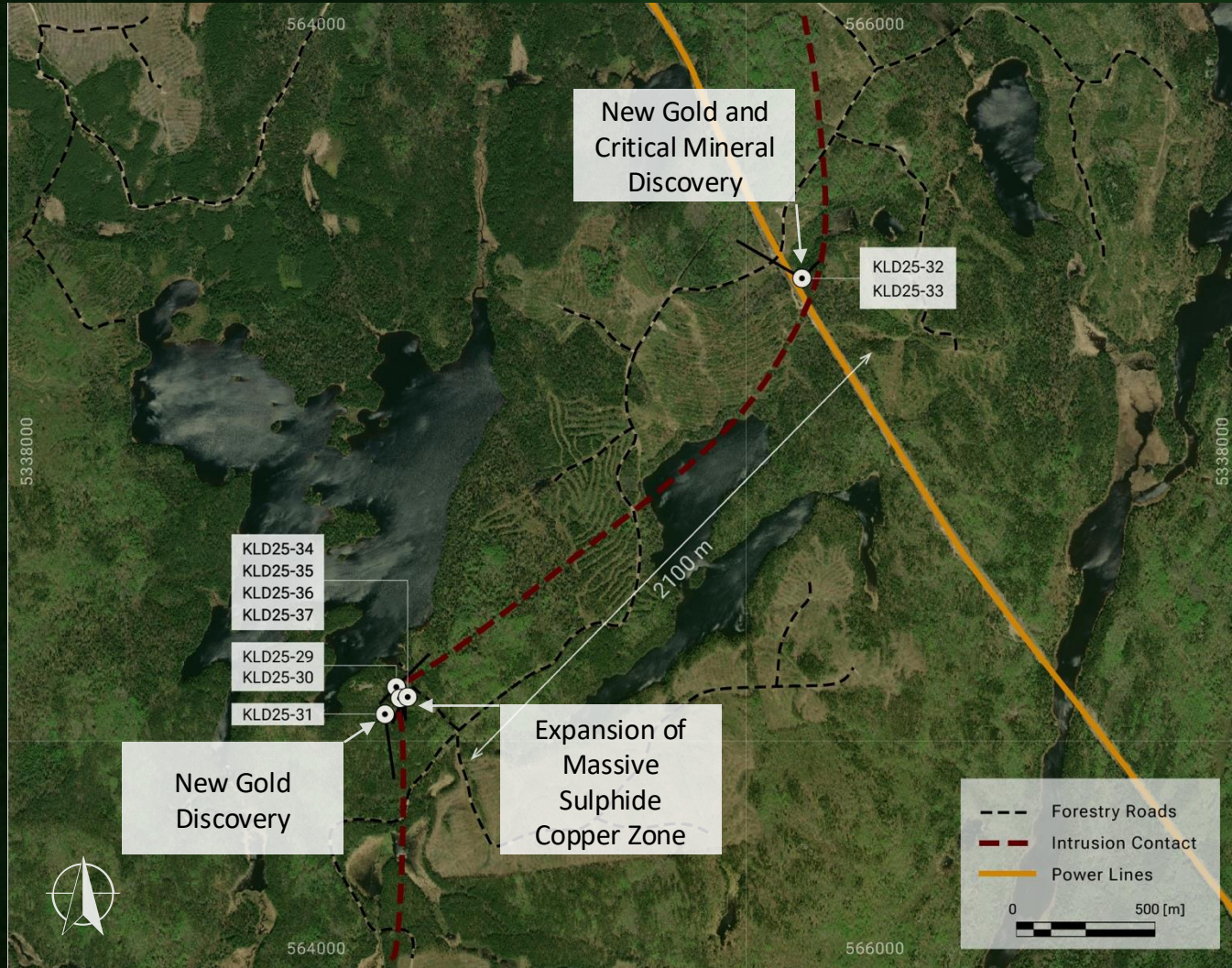


HIGHLIGHTS

- **SEMI-MASSIVE TO MASSIVE SULPHIDES**
KLD 25-28, KLD25-34 to 36 intercepted multiple zones of semi-massive to massive sulphides.
- **INTRUSION-RELATED**
Massive sulphides were associated with wide halos of intense silicification and disseminated sulphides.
- **DEEP SYSTEM?**
KLD25-37 intersected pyrite and chalcopyrite mineralization from 97.5m downhole.



2025 DRILLING UPDATE



HIGHLIGHTS

High-Grade Copper Sulphides:

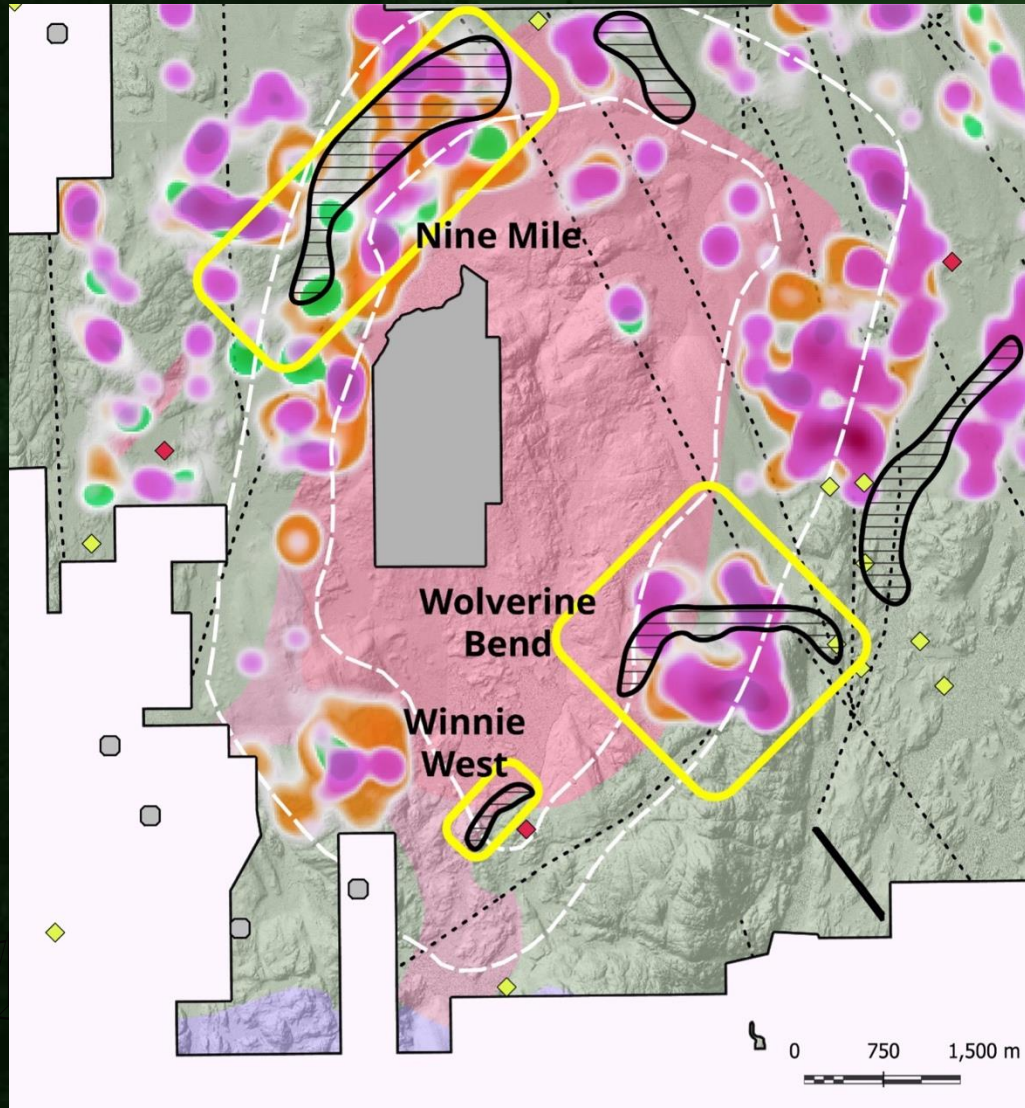
- KLD25-35 31.38 m of **1.22% CuEq** from 14.62m
- KLD25-34 36.5 m of **1.03% CuEq** from 13.5m
- KLD25-28 27.35 m of **1.27% CuEq** from 13.9m
- KLD25-36 32.8 m of **0.93% CuEq** from 14.2m

The recent drilling has validated a robust, intrusive-related deposit model, showing it to be a much larger intrusive-driven system than historically understood.

The geological evidence confirms multiple mineralization styles across different locations. This includes newly discovered syenite-hosted gold systems (mineralization found within the intrusion) as well as large district-scale opportunities encompassing the 17-kilometer Winnie Pluton contact (mineralization at the contact with the country rocks).

NEW 25,000m DRILL PROGRAM COMMENCED NOVEMBER 2025

DISTRICT POTENTIAL

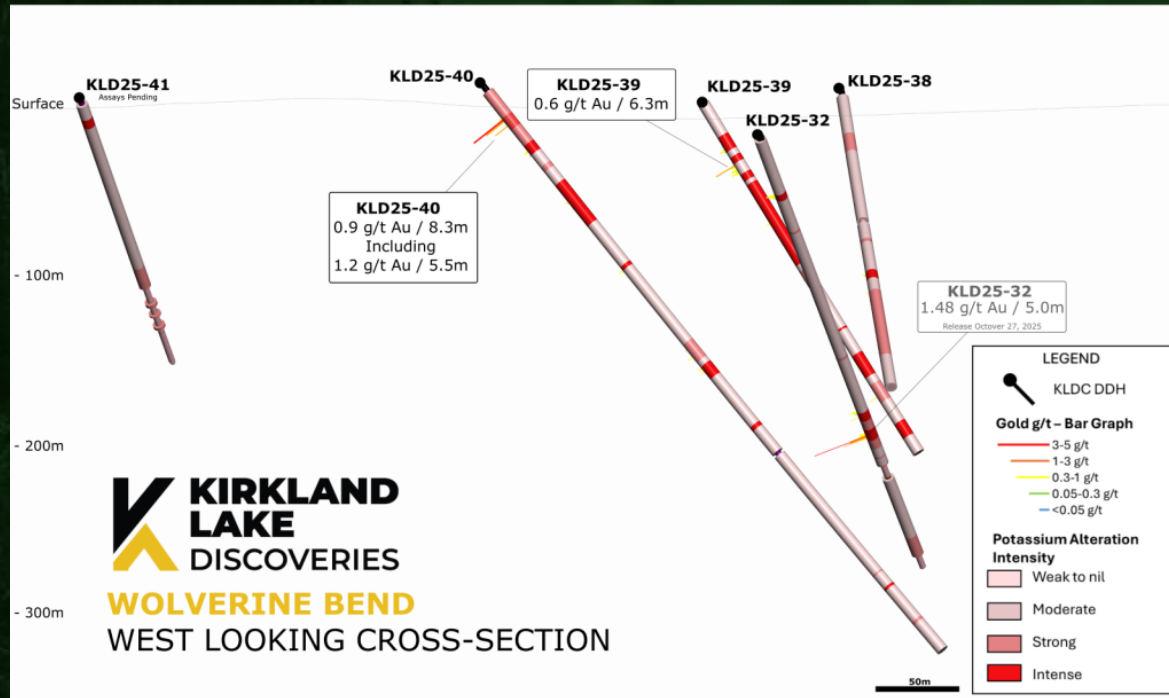


HIGHLIGHTS

- **FIRST DRILL HOLES**
KLDC is the first company to drill-test the Winnie Intrusion with an intrusion-related mineralization model.
- **UNLOCKING DISTRICT POTENTIAL**
The contact of the Winnie Intrusion spans 17 km and KLDC controls all mining claims at that contact, providing discovery potential at a district scale.
- **PRIORITY TARGETS**
Winnie West, Wolverine Bend, and Nine Mile, are all priority targets for our 25,000m drill program.



2026 DRILLING UPDATE

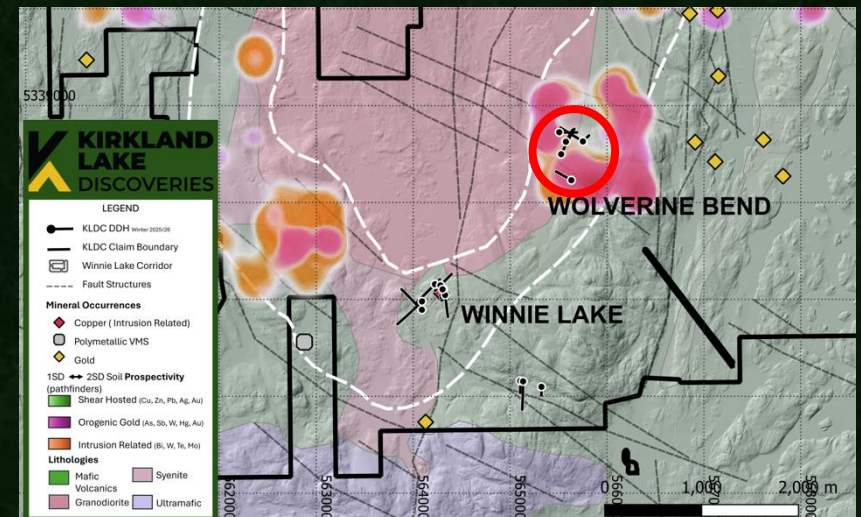


Hole KLD25-40 shows the deep red colour of the altered syenite. Results show a correlation between intensity of alteration and gold mineralization – a characteristic of intrusion-related gold systems.

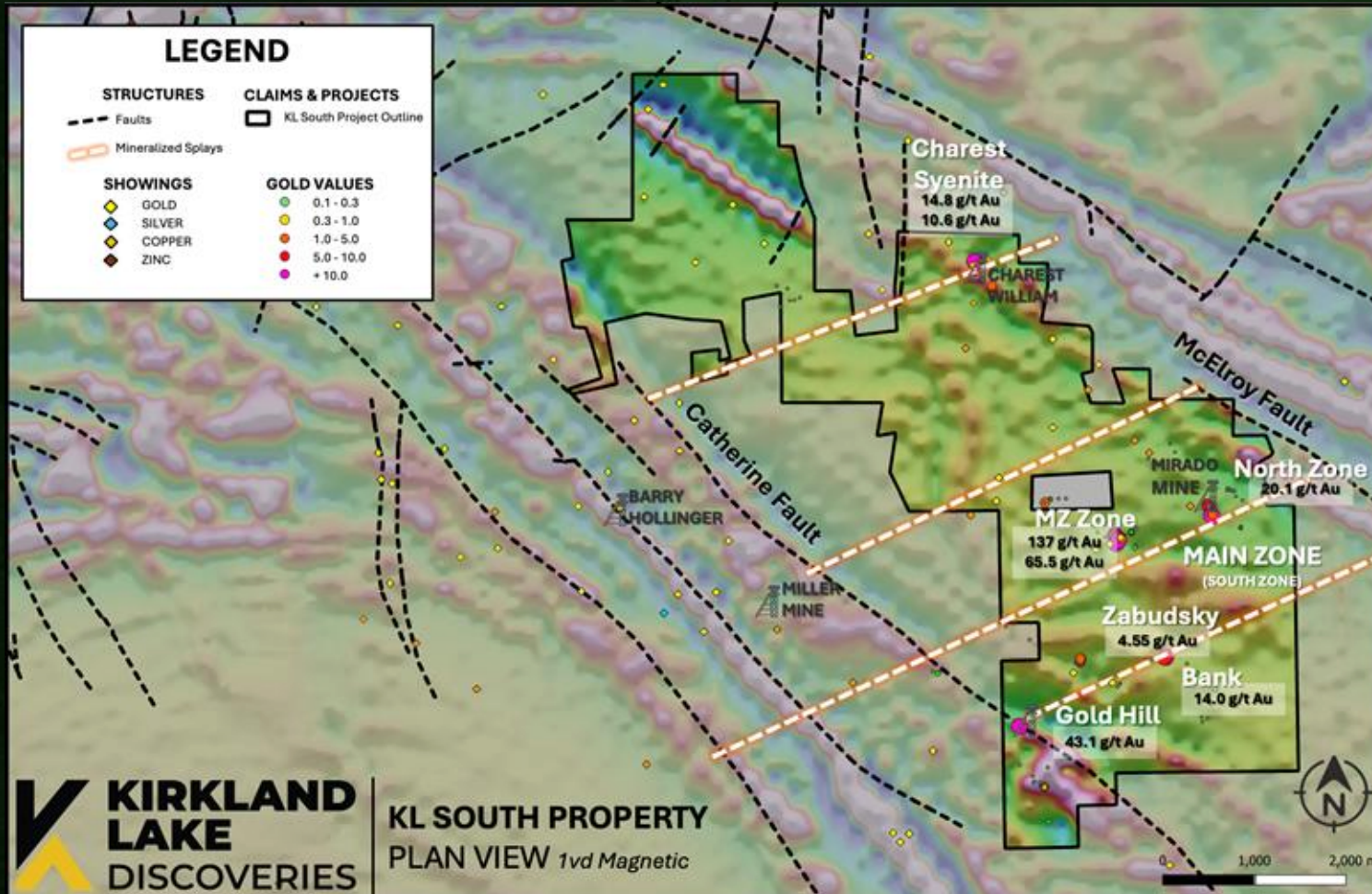
HIGHLIGHTS

Wolverine Bend

- System-scale mineralization supported by elevated Bi and Cu
- Confirmed potential for bulk-tonnage intrusion related gold and copper-rich sulphide mineralization – representing a significant expansion in system potential
- Gold vectoring confirmed through visually altered syenite
- Geological and geochemical results suggest a large and fertile mineralized system

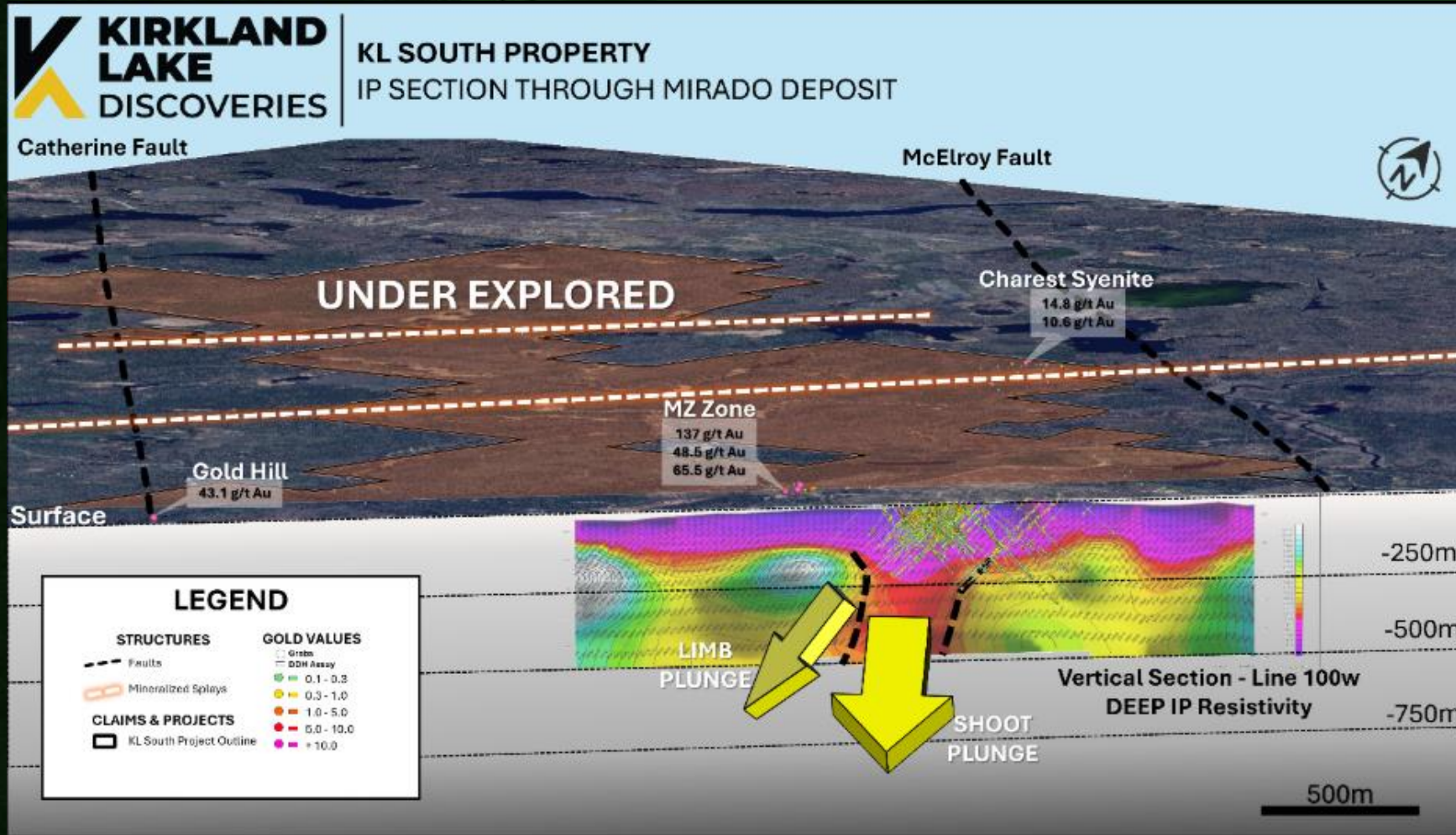


KL SOUTH – EXPANDING EXPLORATION HORIZONS



- **INDICATED RESOURCE**
KL South includes historical resource of 10.6 Mt at 1.29 g/t for 442,000 oz
- **MULTIPLE UNTESTED SHEARS**
Parallel shears between the McElroy and Catherine Fault align with known mineralization at surface and remain untested at depth
- **HIGH-GRADE GOLD**
MZ Zone, Zabudsky, Bank Zone and Gold Hill contain multiple grabs containing high-grade gold up to 137 g/t and 65.5 g/t

MIRADO – OPEN IN ALL DIRECTIONS



- **MINERALIZATION AT SURFACE**
Mineralization starts at surface with open pit potential
- **UNTESTED AT DEPTH**
Historical drilling was mainly above 250m leaving the depth potential completely open
- **UNTESTED IP ANOMALY**
Deep IP resistivity anomaly located beneath known mineralization and down plunge is completely untested



EXPLORATION SUMMARY & OUTLOOK

COMPLETED WORK

2025

- ✓ 1,700 m drilling at KL West.
- ✓ Acquisition of Winnie Lake Property – exploration and drilling summer 2025.
- ✓ Acquisition of Mirado Property – December 2025
- ✓ Over 1000 assays completed, covering KLD25-28 to KLD25-37.
- ✓ Heli-MT survey to define intrusive contact at depth for targeted drilling.

CATALYSTS

2025-2026

- Fully-funded 25,000m drill program commenced November 2025. Driving consistent news flow through 2026.
- Testing new gold and copper horizons.
- Drill testing at Mirado/KL South
- Treasure Hunters Season 2 to follow developments throughout drilling program

CAPITAL STRUCTURE



161.2M
Shares Outstanding

\$45M
Market cap @ \$.25

13.5M
Options

30.6M
Warrants

\$13.5M
Cash

High Net Worth & Retail



(1%)
Management

57.2%

16.4%

10%

9.9%

5%

*Crescat Capital
(0.5%)*

Eric Sprott

Rob McEwen

THE DISCOVERY TEAM



STEFAN SKLEPOWICZ
CHIEF EXECUTIVE OFFICER

Mr. Sklepowicz is a seasoned business executive with extensive experience in strategic planning, corporate development and forging strategic partnerships. His passion for identifying and capitalizing on market opportunities, coupled with his ability to build strong relationships makes him an invaluable asset to the organization's success. Mr. Sklepowicz works closely with the board and technical team to refine the company's narrative, ensuring it is communicated effectively to shareholders and potential investors.



BEN CLELAND
VICE-PRESIDENT, EXPLORATION

Mr. Cleland is a registered Professional Geoscientist (P.Geo) with over 15 years of experience advancing mineral projects in Canada, including senior roles at Vior Inc. and Greenstone Gold Mines. He has a strong track record in exploration strategy, operational oversight, and stakeholder engagement, supporting corporate growth from early-stage discovery through resource delineation. Ben is recognized for his expertise in greenstone belt geology, structural controls on gold mineralization, and integrating geological datasets to guide high-quality exploration decisions.

As Vice President, Exploration, Mr. Cleland oversees exploration strategy, technical governance, and program execution across Kirkland Lake Discoveries' projects, providing leadership to the CEO, executive team, and Board to drive long-term value creation.



MIKE KILBOURNE
SENIOR PROJECT GEOLOGIST

Having been on the former Warrior Gold technical team, Mr. Kilbourne graduated from the University of Western Ontario in 1985 with an Honours BSc. in Geology. His first field season was in 1980, representing over 40 years in the industry. Mr. Kilbourne's career has involved holding various executive positions for junior resource companies, gold production geologist for open pit, underground bulk and narrow vein mining, and long term mine planning for the 10+ simultaneous US aggregate operations. He has supervised and managed over 150,000 meters of diamond drilling in Archean precious and base metal projects. Recent work for a private firm included generating over 700 exploration targets across North America and Mexico.



DRAKE HYDEN
SENIOR PROJECT GEOLOGIST

Mr. Hyden holds a H.BSc. In Earth and Environmental Sciences from Carleton University, Ottawa Canada. His MSc. project is focused on determining the structural controls on high-grade gold mineralization at Gold Terra Resources Corp.'s Yellowknife City Gold Project (YCGP), Northwest Territories. Drake worked as an exploration geologist with Gold Terra's YCGP for three years. Following that, Drake worked as a project geologist for Pure Gold on the Madsen project in Red Lake, Ontario to further expand the underground resource and delineate current and future surface exploration targets. Drake continued his exploration work with Aurion Resources Ltd. and worked on all aspects of the exploration program in Finland including regional to detailed prospect scale geological and structural mapping, drill planning, core logging, QA/QC, data compilation and reporting.

Technical Advisors: Dr. Jean-François Montreuil, Bill Doerner, Danièle Spethmann

KLDC TREASURE HUNT / A JOURNEY TO DISCOVERY

- **Behind-the-Scenes Access:** Follow our journey as we unearth hidden potential — capturing every step, from fieldwork to drilling, through dynamic updates.
- **Join the Hunt:** Weekly or bi-weekly videos will immerse you in the treasure hunt, revealing the highs, lows, and key decisions behind our discoveries.
- **Omniscient Storytelling:** Each update offers a complete narrative, breaking down why and how we make critical decisions along the way.
- **Engaging and Transparent:** Bite-sized content designed to inform, disclose, and entertain — experience the thrill of the hunt with KLDC as we chase our big discovery!



EXPERIENCED BOARD OF DIRECTORS



DENIS LAVIOLETTE
EXECUTIVE CHAIRMAN

Mr. Laviolette brings more than 20 years of experience in mining, exploration, capital markets, and corporate leadership, with a proven track record of driving strategic growth. He is the Founder and Executive Chairman of EarthLabs Inc. (TSXV: SPOT), a technology and investment issuer with more than \$50M in assets. EarthLabs has since acquired [CEO.CA Technologies Ltd.](#), and expanded into complementary mining media through the acquisition of The Northern Miner Group. He is also the founder and former President/CEO of New Found Gold Corp (TSXV: NFG) (NYSE: NFGC), where he was instrumental in one of Canada's most significant high-grade gold discoveries at the Queensway Project in Newfoundland.



GARY NASSIF
DIRECTOR

Mr. Nassif is a professional geologist with 30+ years' experience in gold, base-metal and diamond exploration in Canada, United States and sub-Saharan Africa. He is the former Senior Vice President of Jerritt Canyon Gold, previously privately owned by Sprott Mining Inc. and recently acquired by First Majestic Silver Corp. He is also President & CEO of Argentum Silver Corp., a TSX-V listed explorer, and a director of Inventus Mining. He was previously Manager of Exploration Services for Kerr Mines, Northern Gold Mining, and Trelawney Mining & Exploration prior to its sale to IAMGOLD for \$608 million in 2012.



CHRISTINA MCCARTHY
DIRECTOR

Ms. McCarthy is a geologist with over 15 years of experience in the resource capital markets. Ms. McCarthy is the former President and CEO of Paycore Minerals Inc., recently acquired by i-80 Gold Corp for \$90 million. She previously held the position of Vice President of Corporate Development for New Oproeru Resources Inc., which was acquired by Anacortes Mining Corp. in 2021. Ms. McCarthy served as Director of Corporate Development for McEwen Mining from 2014 to 2019. She spent the past 15 years in various roles, including management and board roles, equity research at Euro Pacific, and Institutional Sales at Haywood Securities, as well as building an exempt market dealer focusing on resources.



VINCENT DUBÉ-BOURGEOIS
DIRECTOR

Vincent Dubé-Bourgeois is Co-Founder and President of EarthLabs Inc. and a board member at Harfang Exploration Inc. Under his leadership, EarthLabs sold the ExplorTech Division, including GoldSpot Discoveries, to ALS Limited for \$30 million. In 2015, at the Integra Gold Rush Challenge, Mr. Dubé-Bourgeois combined his machine learning and geology expertise to lead his team successfully to a share of the \$1 million prize. Mr. Dubé-Bourgeois was previously with the Ontario Geological Survey and Noront Resources Ltd. He holds a BSc in Geology from the University of Ottawa and is recognized for innovative contributions to data science and geoscience, particularly in mineral exploration.

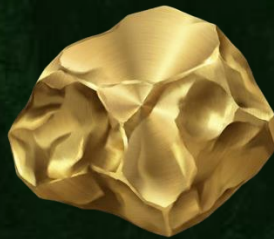


KIRKLAND LAKE OPPORTUNITY: EXECUTING THE BLUEPRINT



PRIME LOCATION

- Tier 1 Mining Jurisdiction (Ontario, Canada)
- Largest land package in the history of the Kirkland Lake camp
- Proximity to major producers including Agnico Eagle



UNDEREXPLORED ROCKS

- Ontario side of Blake River Group is vastly underexplored compared to Quebec
- Samples confirm geological similarity to major deposits in the region



AGGRESSIVE DRILL PROGRAM

- Fully funded 25,000m drill program through 2026
- AI-assisted targeting based on extensive geological modelling



WELL CAPITALIZED

- Recent \$12.7M raise secures multi-year execution runway
- Management track record of securing funding



EXPONENTIAL GROWTH

- Positioned to rapidly close the multi-billion dollar valuation gap upon discovery



KIRKLANDLAKEDISCOVERIES.COM

DRILLING VISUALS



See August 26 Press Release for detailed description of drilling lithologies and mineralization.



KLD25-28



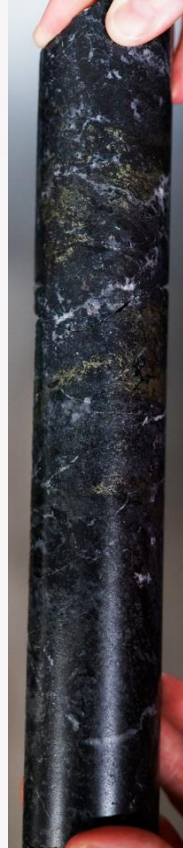
KLD25-28



KLD25-28



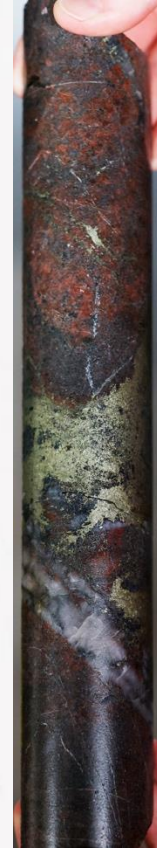
KLD25-31



KLD25-34



KLD25-34



KLD25-35



KLD25-36



KLD25-36

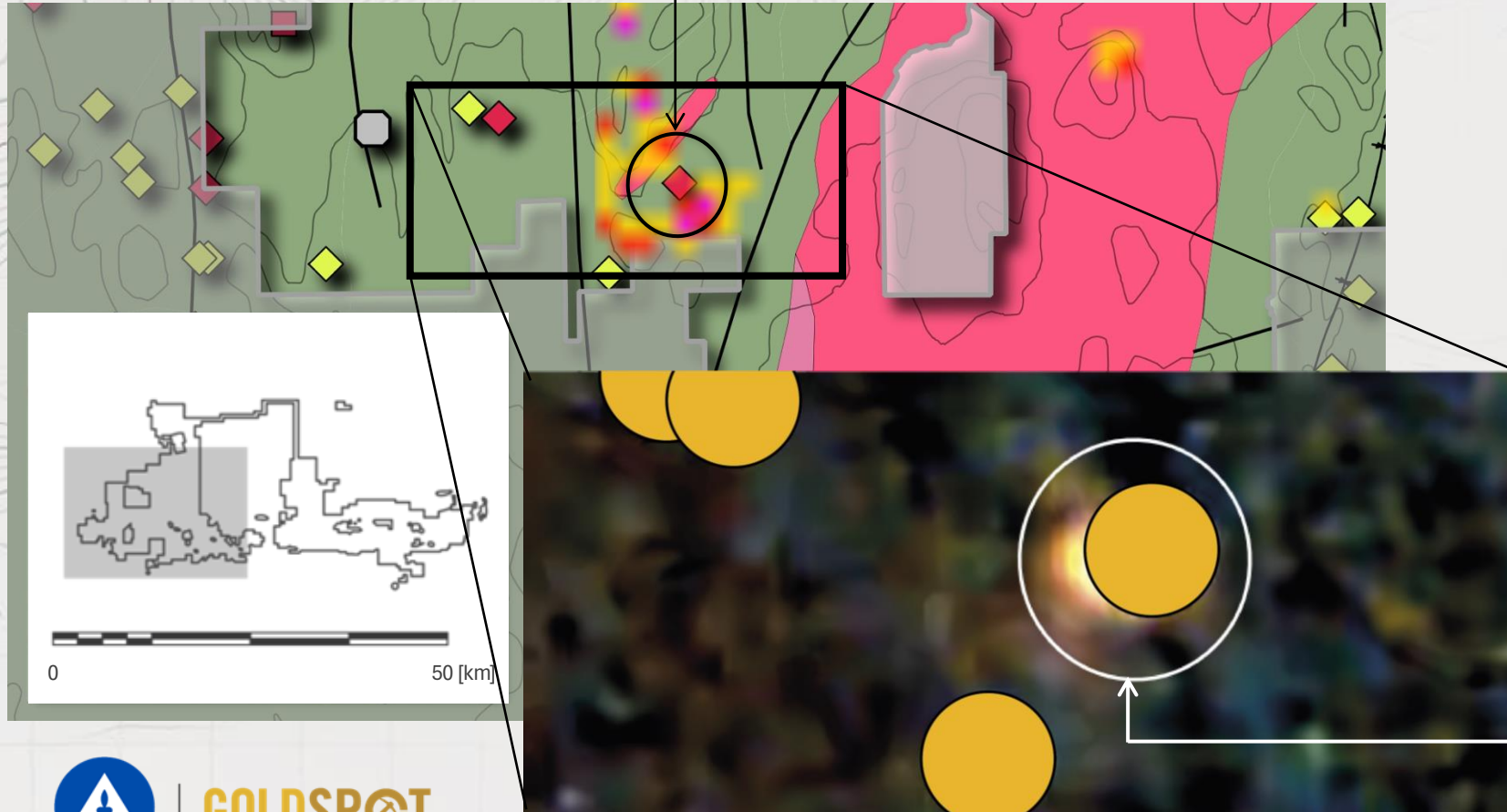


KLD25-37

ANOMALY DETECTION USING AI & HUMAN EXPERTS



GEOCHEMICAL ANOMALY



HIGHLIGHTS

- Analysis of existing electromagnetic (EM) data shows a correlation of chargeability highs with elevated VMS prospectivity from soil analysis.
- ALS GOLDSPOt conducted anomaly pattern detection and matching from known mineralization on over 7,000-line km of EM data. Combined with further analysis of geochemical data, magnetics and bedrock mapping provided prospective targets for ongoing exploration and drilling

**AI HOT SPOT FOR
PROSPECTIVITY/EM ANOMALY**



GOLDSPOt