



DISTRICT-SCALE DISCOVERY POTENTIAL

Exploring in the shadows of headframes

TSX-V: KLDC | US-OTC: KKLKF

May 2024

Historical Tourn Mine – Kirkland Lake, ON

DISCLAIMER



This presentation contains certain forward-looking statements within the meaning of Canadian securities legislation (the “Forward-looking Statements”). The Forward-looking Statements relate to future events or Kirkland Lake Discoveries Corp. (“Kirkland Lake Discoveries” or “KLDC”), future performance, business prospects or opportunities. Any statements that express or involve discussions with respect to predictions, expectations, beliefs, plans, projections, objectives, assumptions or future events or performance (often, but not always, using words or phrases such as “seek”, “anticipate”, “plan”, “continue”, “estimate”, “expect”, “forecast”, “may”, “will”, “project”, “predict”, “potential”, “targeting”, “intend”, “could”, “might”, “should”, “believe”, “outlook” and similar expressions) are not statements of historical fact and may be Forward-looking Statements.

Forward-looking Statements in this presentation include, but are not limited to, statements with respect to KLDC’s future plans and exploration programs, including the timing of such plans and programs, and the merits of KLDC’s mineral properties.

Although Kirkland Lake Discoveries believes that these Forward-looking Statements are based on reasonable assumptions, all Forward-looking Statements involve known and unknown risks, uncertainties and other factors that may cause the actual results, performance, achievements, events, or circumstances of KLDC to be materially different than expressed or implied by the Forward-looking Statements. Such risks include, among others, uncertainties related to fluctuations in metal prices; uncertainties inherent in the exploration of mineral properties; risks associated with the interpretation of drilling results and other tests; changes in planned work resulting from weather, logistical, technical or other factors; the possibility that results of work will not fulfill expectations and realize the perceived potential of KLDC’s mineral properties; the possibility that required permits may not be obtained in a timely manner or at all; risk of accidents, equipment breakdowns or other unanticipated difficulties or interruptions; the possibility of cost overruns or unanticipated expenses in work programs; the risk of environmental contamination or damage resulting from the exploration operations; the need to comply with environmental and governmental regulations; and the availability, or lack thereof, of capital and financing.

These Forward-looking Statements speak only as of the date of this presentation. Except as required by applicable securities laws, KLDC undertakes no obligation to update these Forward-looking Statements if management’s beliefs, estimates or opinions, or other factors, should change.

Qualified Person

Mike Kilbourne, P. Geo., a qualified person as defined in National Instrument 43-101, has reviewed and approved the technical content of this presentation on behalf of the Company.

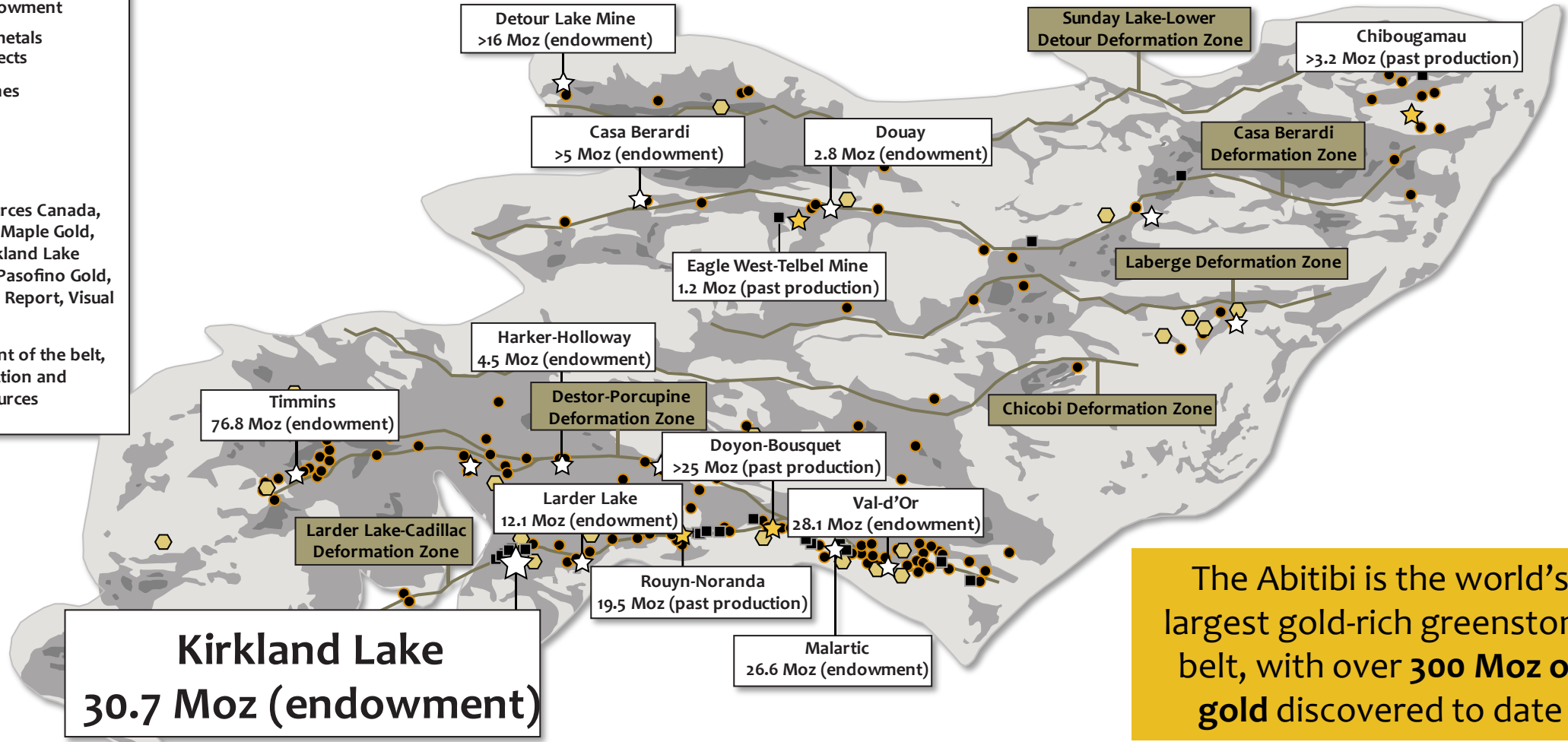
For more information on Kirkland Lake Discoveries, readers should refer to KLDC’s website at www.kirklandlakediscoveries.com.

REMARKABLE GEOLOGICAL SETTING

- ★ Gold camps, past production
- ☆ Gold camps, endowment
- ⬡ Active precious metals exploration projects
- Deformation Zones
- Past Mines
- Gold Deposits

Source: Natural Resources Canada, Midland Exploration, Maple Gold, Hecla Mining Co., Kirkland Lake Gold, CBay Minerals, Pasofino Gold, Detour Lake Technical Report, Visual Capitalist

*The total gold content of the belt, including past production and current reserves/resources

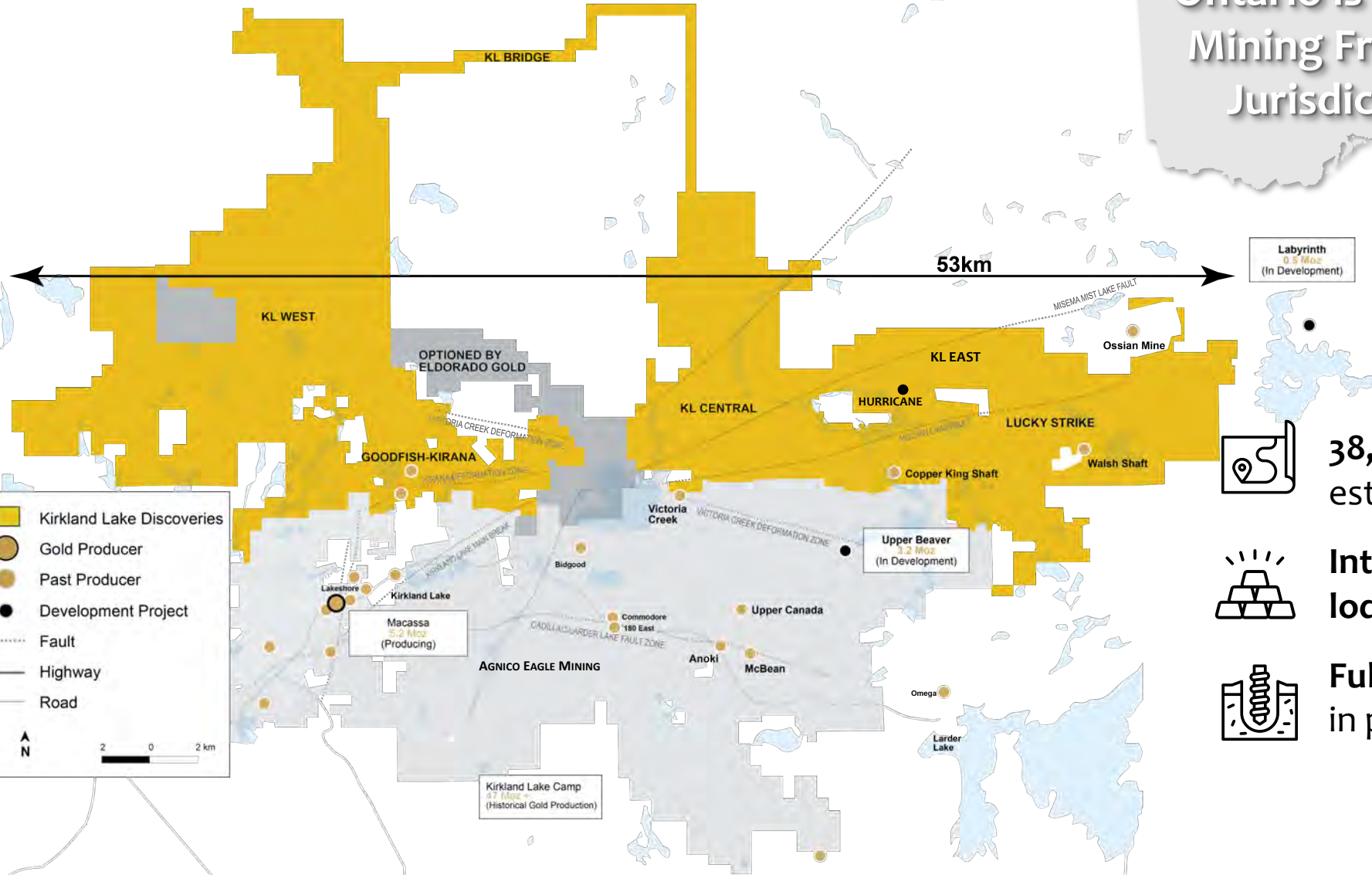


The Abitibi is the world's largest gold-rich greenstone belt, with over **300 Moz of gold** discovered to date

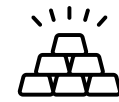
ONE OF THE LARGEST CONSOLIDATED LAND PACKAGE IN THE HISTORY OF THE CAMP



Ontario is a Tier 1
Mining Friendly
Jurisdiction



38,000 ha claim package in an established brownfields camp

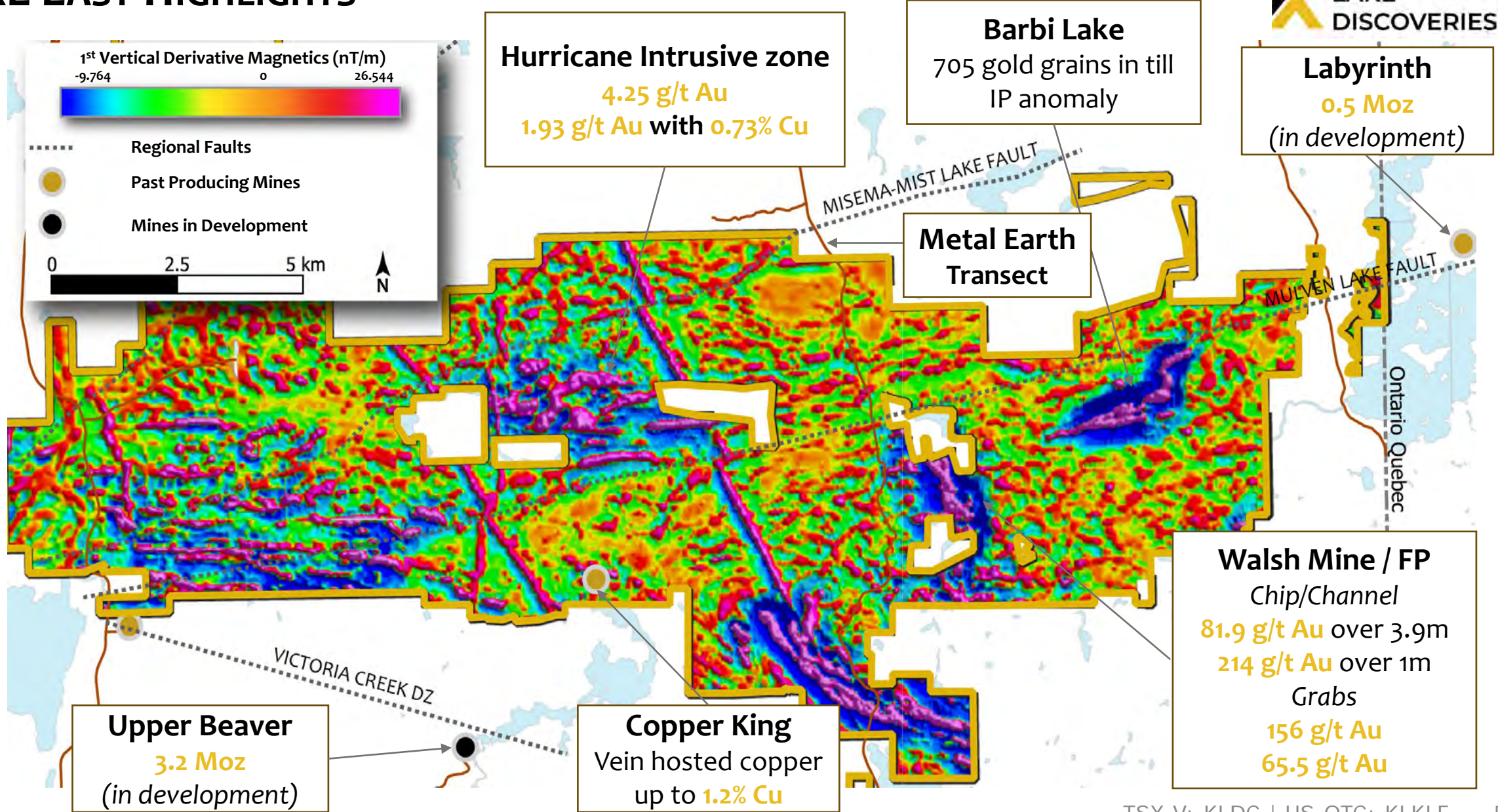


Intrusive gold/copper and lode gold mineralization

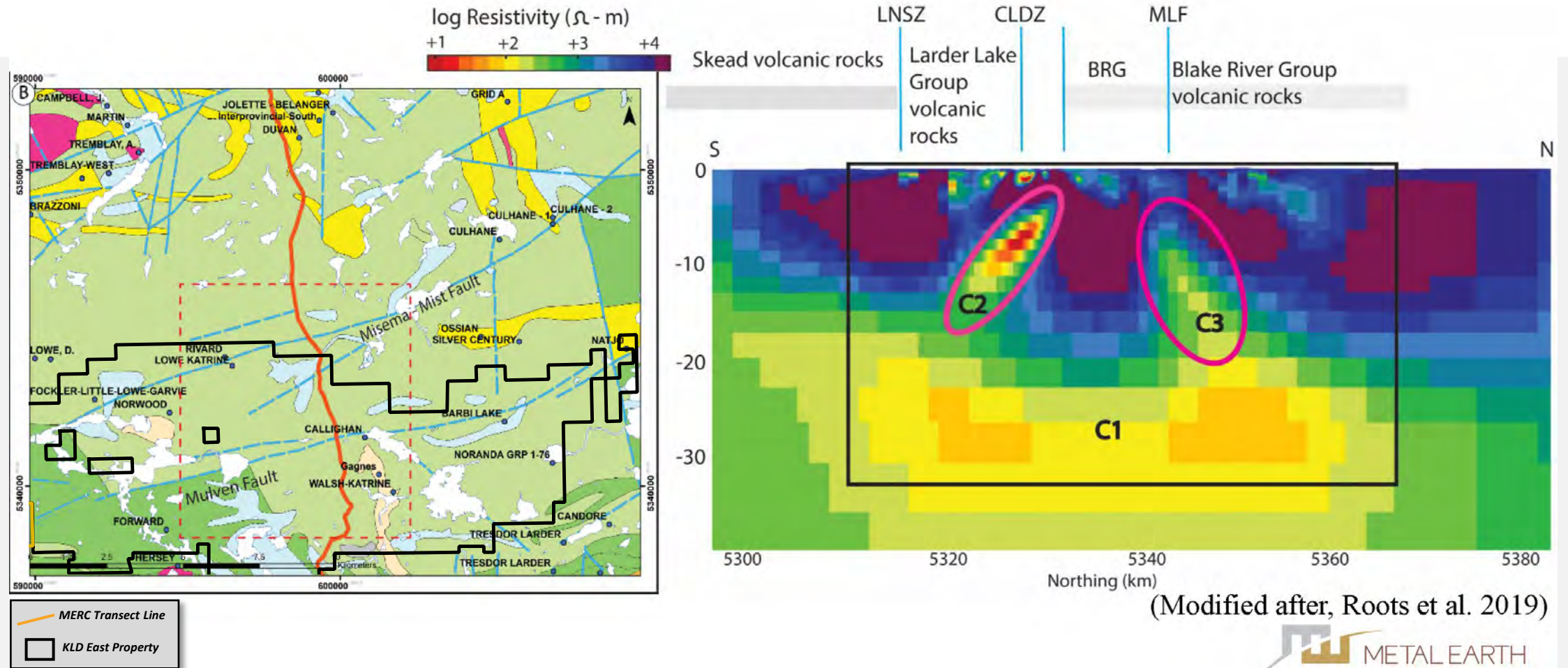


Fully funded 10,000m drill program in progress | news flow ongoing

KL EAST HIGHLIGHTS

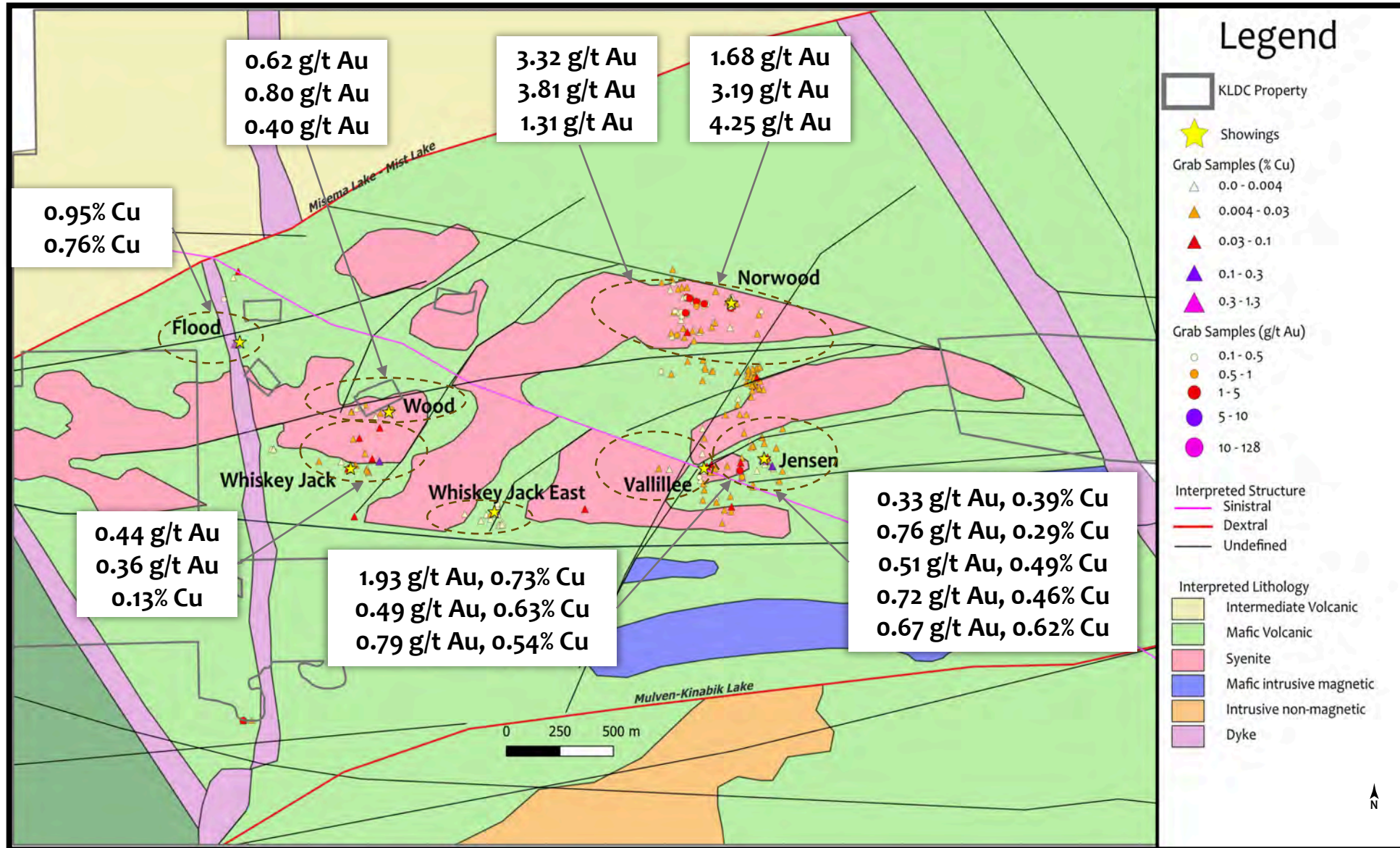


MERC STUDIES REVEAL REGIONAL DEEP-SEATED STRUCTURES



Metal Earth transect (left red line) and magnetotelluric (MT) cross-section (right) of the Larder Lake transect in the Abitibi greenstone belt. LNSZ Lincoln Nipissing Shear Zone; CLDZ Cadillac Larder deformation zone; BRG Blake River Group; MLF Mulven/Misema Lake fault.

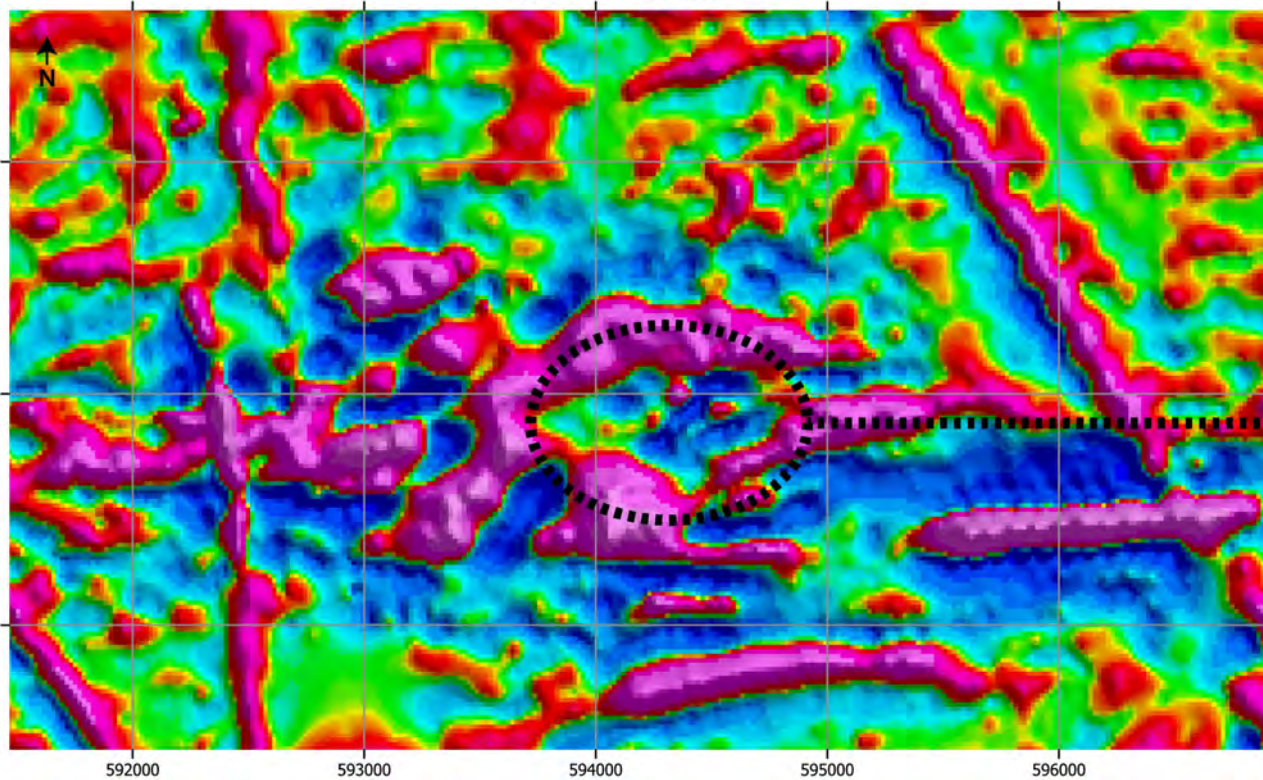
PROSPECTING REVEALS WIDESPREAD GOLD-COPPER MINERALIZATION



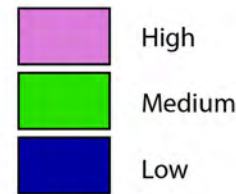
UPPER BEAVER 2.0? HURRICANE ZONE



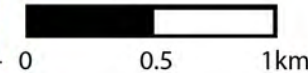
Hurricane Zone



1st Vertical Derivative
Magnetic Signature

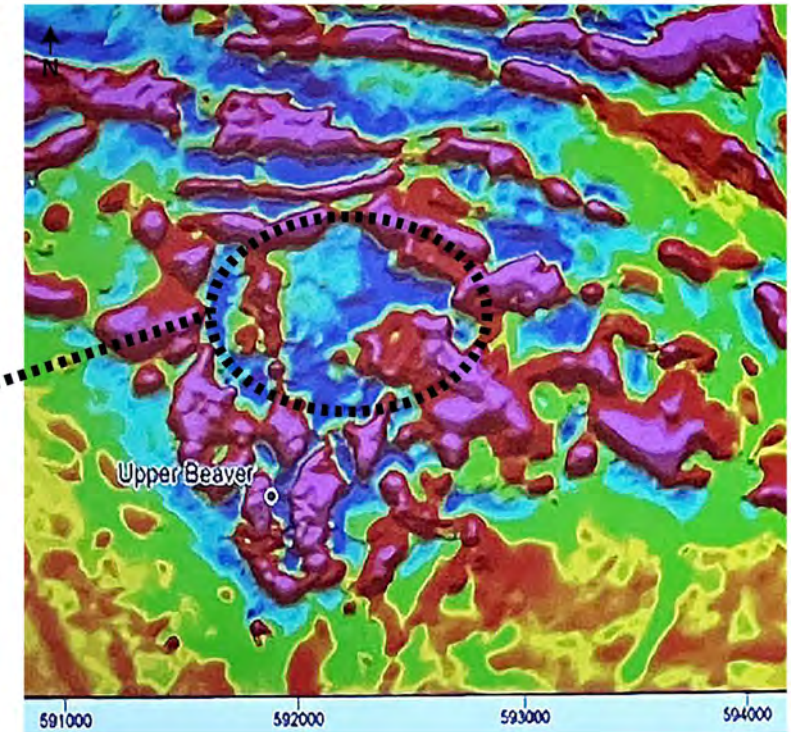


Magnetic low
surrounded by
magnetic high



AGNICO EAGLE

Upper Beaver Intrusive Complex



- The Hurricane Zone is a series of areas dominated by syenite intrusives.

- The Upper Beaver is defined by an oval-shaped magnetic low feature – surrounded by a magnetic high response

UPPER BEAVER 2.0? HURRICANE ZONE

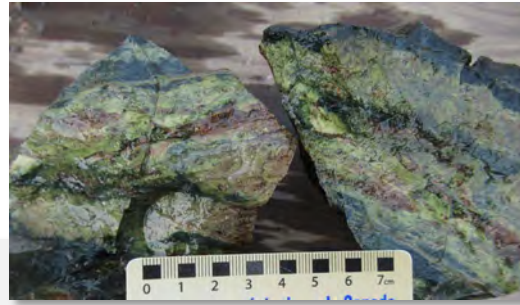


Epidote-Magnetite-Chalcopyrite-Gold & Orthoclase-Sericite-Albite-Hematite

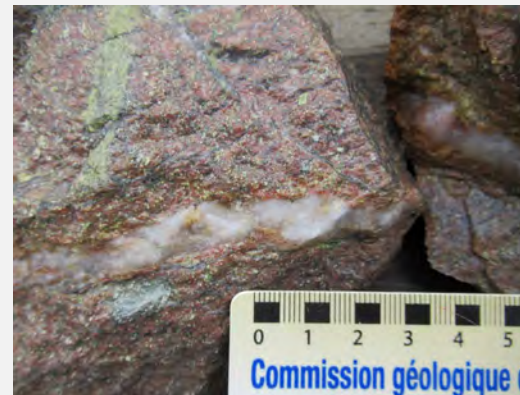


Mafic Syenite Porphyry

- Mineralization at Upper Beaver “Is associated with minor to pervasive alteration which includes feldspar, epidote, carbonate, sericite, silica and magnetite with trace hematite” – Queenston Mining, Upper Beaver Gold Copper Deposit Preliminary Economic Assessment – 8.1 Mineralization – pg. 30 - 03.30.2012

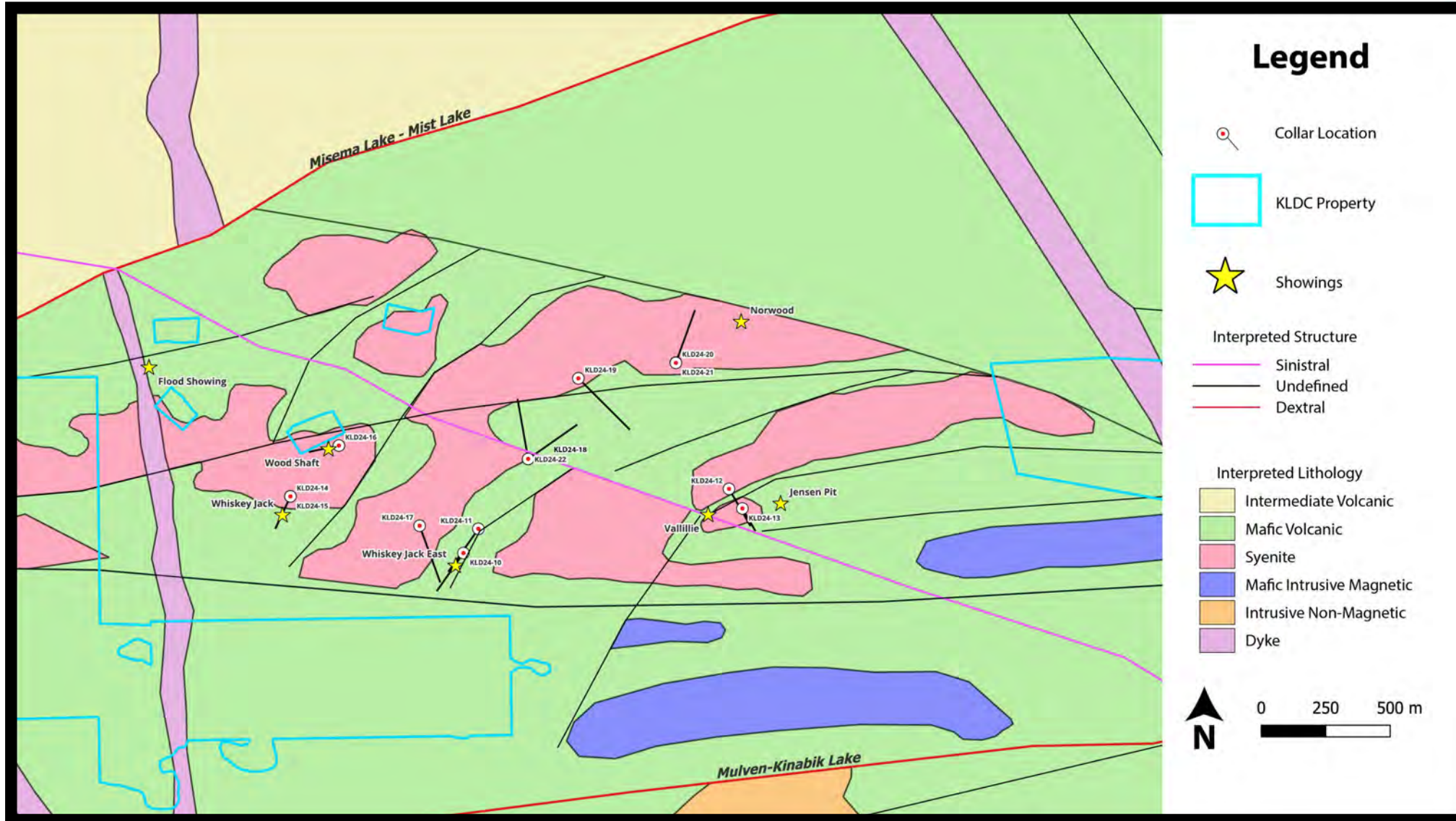


Grab samples from 2023 field exploration program at Hurricane Intrusive Zone



- Contains silicously altered rocks with bright green epidote, minor chalcopyrite, magnetite and contain a well-developed stockwork complex.
- Hurricane is fault bounded between the Misema and Mulven Lake Faults which are deep-seated and provide the hydrothermal conduit.
- 2023 samples include up to 4.25 g/t Au, 0.95% Cu and 1.93 g/t Au with 0.73% Cu.

INAUGURAL DRILL PROGRAM AT HURRICANE INTRUSIVE ZONE



KL WEST HIGHLIGHTS

2022 Prospecting Grabs

34.7 g/t Au
 21.6 g/t Au
 6.61% Cu | 47.9 g/t Ag | 2.24 g/t Au

Goodfish-Kirana

Drilling 2018-2023
 21.33 g/t Au over 2.45m
 104.5 g/t Au over 1m
 155 g/t Au over 0.75m
 316.55 g/t Au over 0.5m
 1.22 g/t Au over 74m
 2.07 g/t Au over 7.7m

Historical Channel (Hargreaves)

9.92 g/t Au over 60.96 m

Macassa

5.2Moz Au
 (Producing)

1st Vertical Derivative Magnetics (nT/m)
 -9.764 0 26.544



- Regional Faults
- Past Producing Mines
- Mines in Development

0 2.5 5 km



HIGH-GRADE OROGENIC GOLD AT GOODFISH/KLW

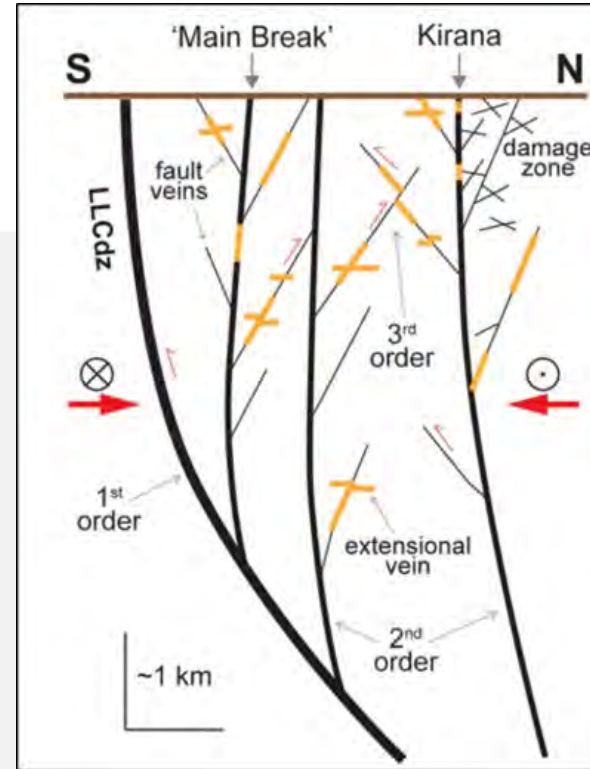


Examples of high-grade orogenic gold found at Macassa Mine

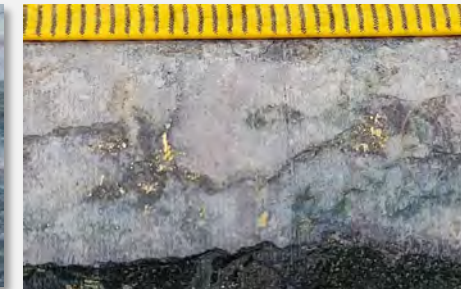
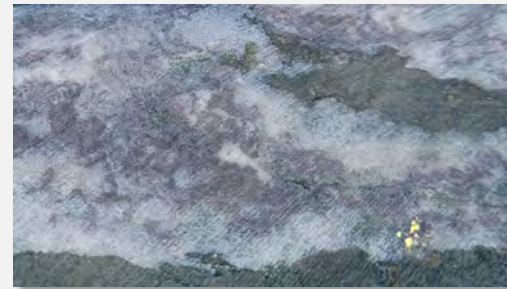
AGNICO EAGLE

- The Macassa mine, located in the Town of Kirkland Lake, Ontario, remains one of the highest-grade gold mines in the world. Since its initial discovery in the area in 1911, gold has been a staple in the town's history.
- The gold mineralization at Macassa is found along breaks or faults, in veins as quartz-filled fractures, as breccias, and as sulphide rich (pyrite) zones.*

*<https://www.agnicoeagle.com/English/operations/operations/Macassa-Mine/default.aspx>



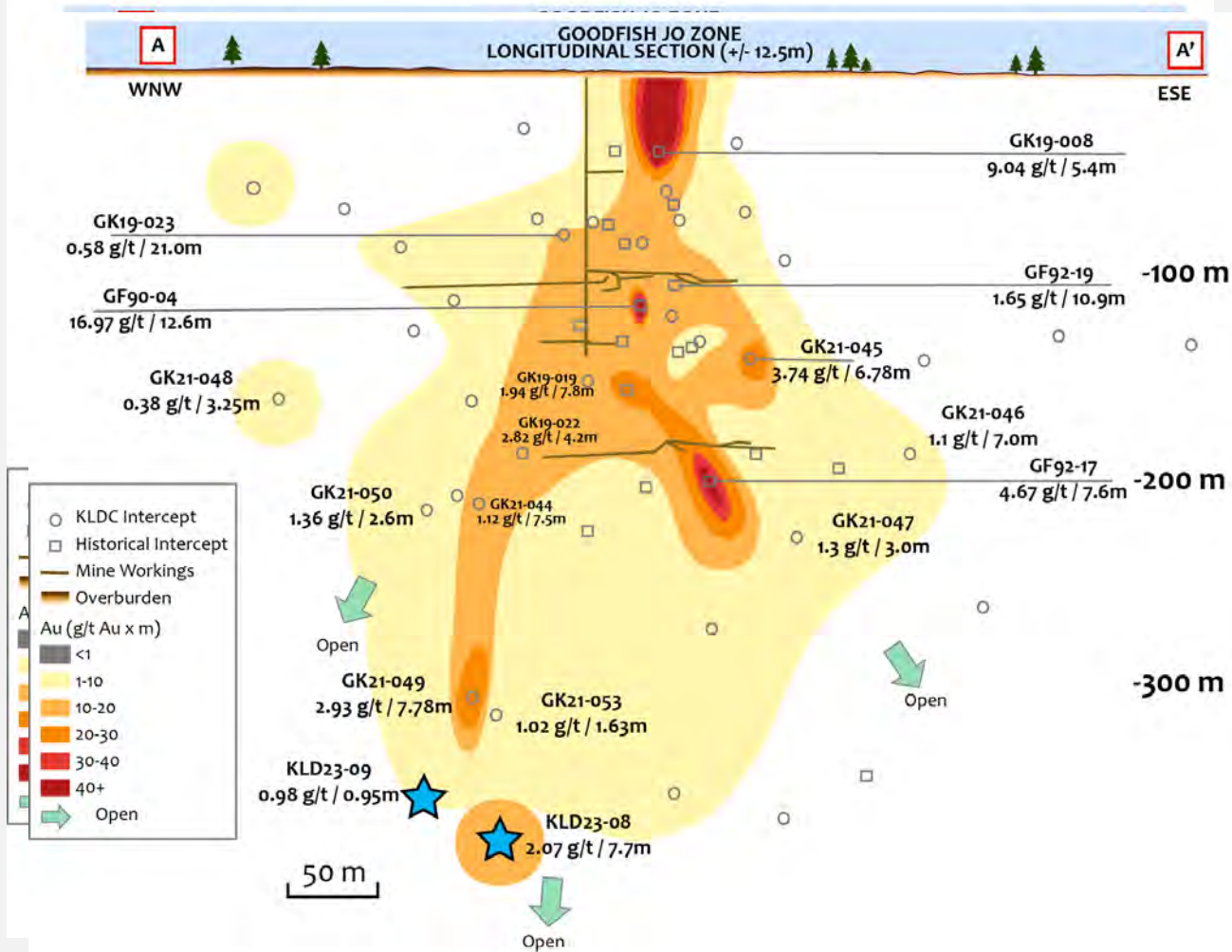
Ben Frieman 2019



Examples of high-grade orogenic gold found in drill core at the Goodfish Kirana Property

- 88% of drilling completed from 2018-2023 intercepted anomalous and high-grade gold
- Mineralization is associated with structures and sulphide mineralization
- Kirana DZ, like the Main Break, is a 2nd order structure off the Larder Lake Cadillac Deformation Zone

2023 DRILL RESULTS EXTEND MINERALIZED ZONE AT GOODFISH



Drill Hole	Zone	From (m)	To (m)	Length (m)	Grade (Au g/t)
GK19-003	Mel Zone	137.00	139.45	2.45	21.33
GK19-004	Mel Zone	43.60	44.50	0.90	10.40
GK19-005	Mel Zone	84.68	85.78	1.10	4.35
GK19-005	Mel Zone	56.96	57.96	1.00	7.75
GK19-005	Mel Zone	104.85	105.80	0.95	6.56
GK19-007	Mel Zone	97.58	98.58	1.00	104.50
GK19-008	Jo Zone	65.24	70.61	5.37	9.04
GK19-013	Jo Zone	37.50	38.50	1.00	6.47
GK19-018	Jo Zone FW	23.50	26.50	3.00	11.52
GK19-025	Jo Zone FW	74.00	75.50	1.50	11.25
GK19-025	Jo Zone FW	364.50	366.00	1.50	8.40
GK20-028	Jo Zone FW	57.00	60.00	3.00	6.78
GK20-028	Jo Zone NS-FW	87.00	161.00	74.00	1.22
GK20-028	Jo Zone FW	196.00	203.00	7.00	4.07
GK20-028	Jo Zone	219.00	220.00	1.00	3.76
GK20-032	Jo Zone FW	221.69	224.00	2.31	3.69
GK20-033	Mel Zone	101.00	103.00	2.00	3.41
GK20-033	Mel Zone	152.50	155.50	3.00	3.93
GK21-036	Jo Zone FW	128.20	132.00	3.80	3.85
GK21-039	Jo Zone FW	53.50	55.00	1.50	4.52
GK21-041	Mel Zone	47.50	49.00	1.50	2.60
GK21-041	Mel Zone	64.00	67.00	3.00	6.68
GK21-043	Jo Zone FW	104.10	105.40	1.30	3.61
GK21-045	Jo Zone	184.00	190.80	6.80	3.74
GK21-049	Jo Zone HW	319.00	319.75	0.75	155.00
GK21-049	Jo Zone	375.95	383.73	7.78	2.93
GK21-050*	Jo Zone HW	419.27	419.77	0.50	72.10

* This intersection encountered VG; the other half of core assayed 561 g/t Au over 0.50 m.

2023 EXPLORATION SUMMARY



High-resolution 50m – 100m spaced airborne geophysics – ~2,100 line-kilometres



Site visit by ALS GoldSpot Structural Geologist



2,991m drill program at Goodfish-Kirana



Mapping, sampling & prospecting, 535 samples



Geophysical/Structural Interpretation – ALS GoldSpot



Drilling/exploration permits approved & valid to 2026



Planning of Phase 2 - 4,000m diamond drilling

2024 EXPLORATION OUTLOOK



Finalized Cooperation Agreement with Beaverhouse First Nation



Completed inaugural 3,376 m drill program at Hurricane Intrusive Zone. Assays pending.



Planning & defining scope of summer exploration program. Includes: Prospecting, mapping, follow up drilling, regional geochemical sampling program. Planning of Phase 3 drilling pending assay results.



CAPITAL STRUCTURE



88.6M

Shares Outstanding

6.78M

Options | avg. \$.18

32M

Warrants | avg. \$.39

Insiders

EARTHLABS 

High Net Worth and Retail



Eric Sprott



NEWFOUND
GOLD CORP

\$4.3M

Working Capital

Capital structure as of January 08, 2024, cash as of September 30, 2023

EXPERIENCED BOARD OF DIRECTORS



**Denis
Laviolette**

Founder, Non-Executive Chairman

Mr. Laviolette has over 15 years of experience in mining and capital markets; worked as a production and exploration geologist in Northern Ontario (Timmins, Kirkland Lake and Red Lake), Norway and Ghana. Later worked as a mining analyst with Pinetree Capital. Founder, Director and Executive Chairman of EarthLabs Inc. (formerly GoldSpot Discoveries Corp.) (TSX.V: SPOT); Co-Founder, Director and President of New Found Gold Corp. (TSX.V: NFG); and serves as a Director for Xtra-Gold Resources Corp. (TSE: XTG) and Radio Fuels Energy Corp. (CNSX: CAKE).



**Gary
Nassif**

Director

Mr. Nassif is a professional geologist with 25+ years' experience in gold, base-metal and diamond exploration in Canada, United States and sub-Saharan Africa. He is the former Senior Vice President of Jerritt Canyon Gold, previously privately owned by Sprott Mining Inc. and recently acquired by First Majestic Silver Corp. He is also President & CEO of Argentum Silver Corp., a TSX-V listed explorer, and a director of Inventus Mining. He was previously Manager of Exploration Services for Kerr Mines, Northern Gold Mining, and Trelawney Mining & Exploration prior to its sale to IAMGOLD for \$608 million in 2012.



**Christina
McCarthy**

Director

Ms. McCarthy is a geologist with over 15 years of experience in the resource capital markets. Ms. McCarthy is the former President and CEO of Paycore Minerals Inc., recently acquired by i-80 Gold Corp for \$90 million. She previously held the position of Vice President of Corporate Development for New Operu Resources Inc., which was acquired by Anacortes Mining Corp. in 2021. Ms. McCarthy served as Director of Corporate Development for McEwen Mining from 2014 to 2019. She spent the past 15 years in various roles, including management and board roles, equity research at Euro Pacific, and Institutional Sales at Haywood Securities, as well as building an exempt market dealer focusing on resources.



**Vincent
Dubé-Bourgeois**

Director

Vincent Dubé-Bourgeois is Co-Founder and President of EarthLabs Inc. and a board member at Harfang Exploration Inc. Under his leadership, EarthLabs sold the ExplorTech Division, including GoldSpot Discoveries, to ALS Limited for \$30 million. In 2015, at the Integra Gold Rush Challenge, Mr. Dubé-Bourgeois combined his machine learning and geology expertise to lead his team successfully to a share of the \$1 million prize. Mr. Dubé-Bourgeois was previously with the Ontario Geological Survey and Noront Resources Ltd. He holds a BSc in Geology from the University of Ottawa and is recognized for innovative contributions to data science and geoscience, particularly in mineral exploration.



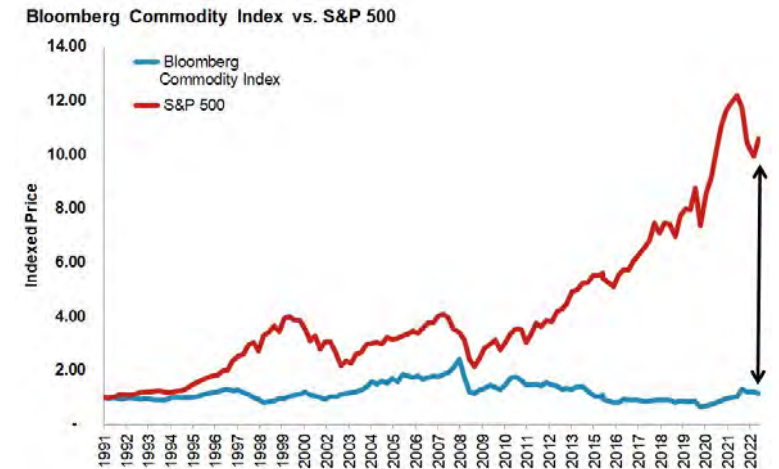
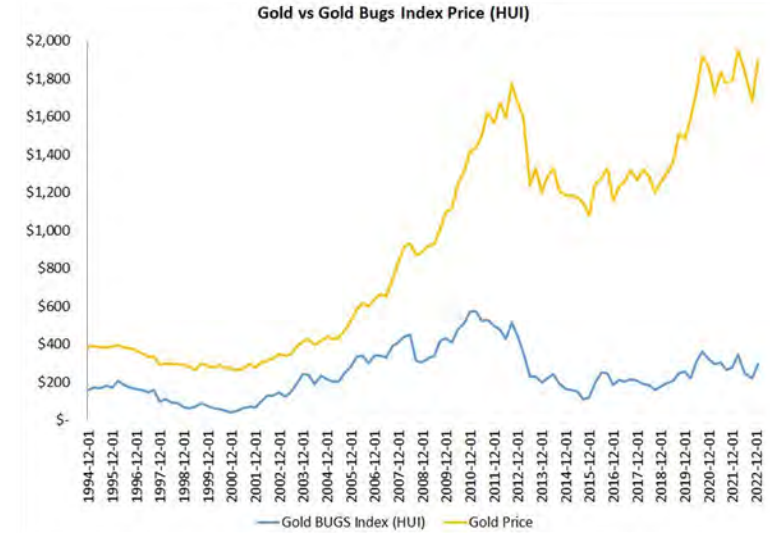
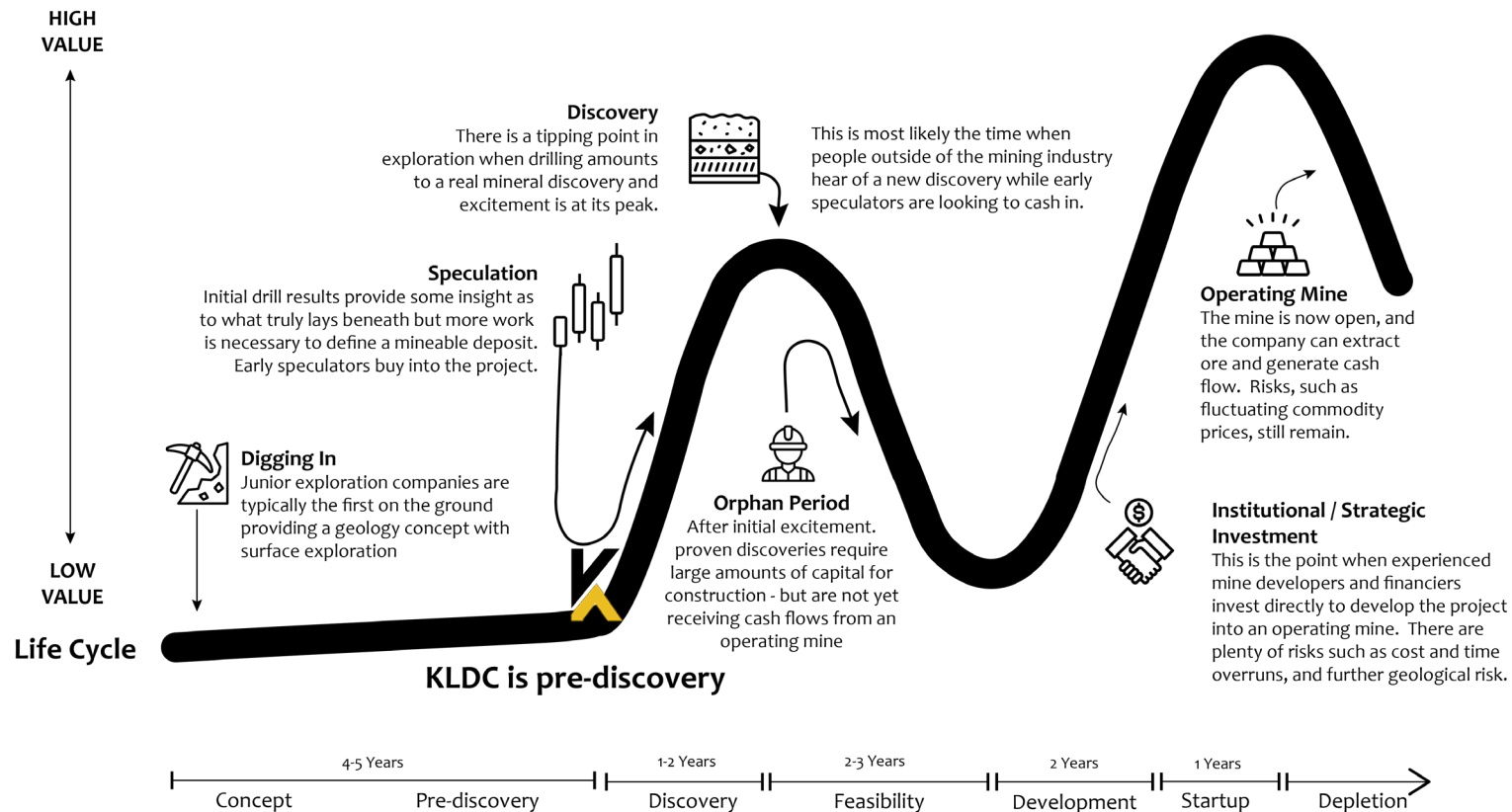
GREAT INVESTMENT OPPORTUNITY



KLDC is pre-discovery and fully funded for 10,000 m of drilling in an established brownfields camp in a tier-1 jurisdiction



Market indicators are pointing to a mining stock correction



Source: Capital IQ



FOR MORE INFORMATION

STEFAN SKLEPOWICZ

Interim CEO

stefan@kirklandlakediscoveries.com

+1 226 979 3515